

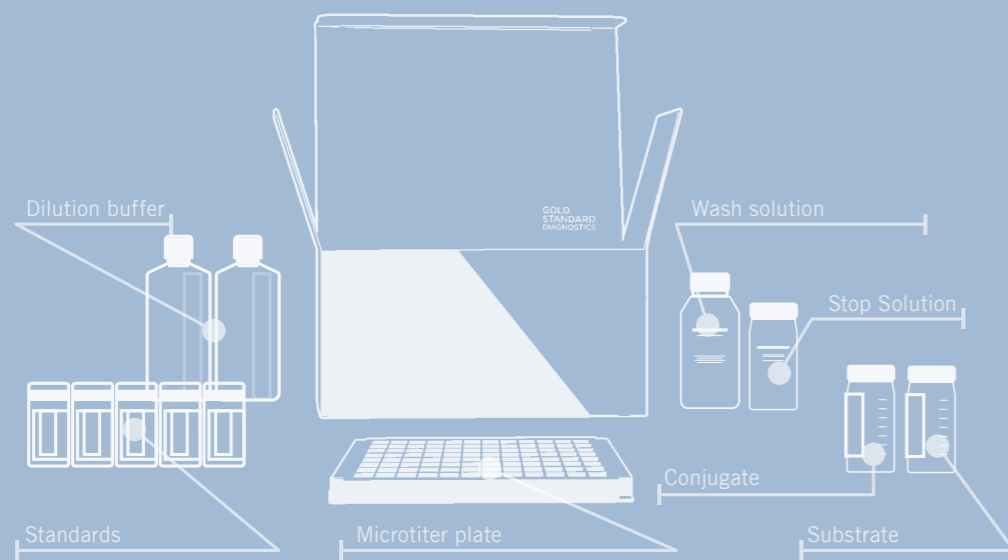
# Analytical Test Kits and Instruments

Food, Feed, Animal Health and  
Environmental Applications

Catalogue 2025



Find the best solution  
for your testing needs



## Analytical Test Kits and Instruments Catalogue 2025

Food, Feed, Animal Health and  
Environmental Applications



# TABLE OF CONTENTS

- Contacts and Locations ..... 6
- ALLERGENS ..... 8**
  - SENSISpec Allergen Detection ELISA Kits ..... 10
  - SENSISpec Gluten Detection ELISA Kits ..... 11
  - Supplementary Products ..... 11
  - SENSIStrip Lateral Flow Tests ..... 11
  - RapidScan ST5-W Lateral Flow Assay Reader ..... 12
  - DNAllergen PCR Kits ..... 12
  - Allergen Control Materials ..... 12
  - SENSISwab Swabbing Solution ..... 12
- VITAMIN ANALYSIS ..... 14**
  - SENSISpec ELISA Vitamin Kits ..... 15
  - SENSIColumn Vitamin Immunoaffinity Columns ... 15
- FOOD PATHOGENS ..... 16**
  - Solutions for Enrichment ..... 18
  - Enrichment Media for BACGene ..... 18
  - Solutions for Analysis ..... 18
  - Free DNA Removal ..... 18
  - BACGene Real-Time PCR Kits ..... 18
  - OT-2 Liquid Handler for BACGene Use ..... 18
  - BACGene Accessory Item ..... 19
  - Solutions for Confirmation ..... 19
  - Microgen Biochemical Identification Kits ..... 19
  - Solutions for Sampling ..... 19
  - Microgen Path-Chek Kits ..... 19
  - Microgen Latex Agglutination Kits ..... 19
  - O157 and non-O157 STEC Identification ..... 20
  - IMS Beads for the use with  
BACGene E.coli STEC Solution ..... 20
- FOODBORNE VIRUSES ..... 22**
  - VIRSeek Qualitative Real-Time RT-PCR ..... 23
  - VIRSeek RNA Extraction ..... 23
  - VIRSeek Food Process Control ..... 23
- MYCOTOXINS ..... 24**
  - SENSIStrip Lateral Flow Tests ..... 26
  - SENSIStrip Equipment and Accessories ..... 26
  - B ZERO® Quantitative ELISA Test Kits ..... 26
  - Celer® Quantitative ELISA Test Kits ..... 27
  - l'screen Quantitative ELISA Test Kits ..... 27
  - Water-based Quantitative ELISA Test Kits ..... 27
  - ABRAXIS® Patulin Test Kit ..... 27
  - Immunoaffinity Columns ..... 28
  - Supplementary Products ..... 28

- GENETICALLY MODIFIED ORGANISMS (GMO) ..... 30**
  - SpeciesScreen & SpeciesIdent ..... 32
  - GMOScreen Kits ..... 32
  - GMO PCR Testing Kits for Corn/Maize ..... 33
  - GMO PCR Testing Kits for Soybean ..... 35
  - GMO PCR Testing Kits for Canola/Rapeseed ..... 36
  - GMO PCR Testing Kits for Cotton ..... 37
  - GMO PCR Testing Kits for Other Species ..... 37
  - GMO ELISA Testing Kits ..... 40
  - GMO Lateral Flow Devices ..... 40
  - RapidScan ST5-W Lateral Flow Assay Reader ..... 41
  - GMO Lateral Flow Strips for  
RapidScan ST5-W Lateral Flow Reader ..... 41
- NUCLEIC ACID ISOLATION ..... 42**
  - DNA Isolation Offering ..... 43
- VETERINARY DRUG RESIDUES AND ADDITIVES ..... 44**
  - l'screen Quantitative ELISA Test Kits ..... 46
  - l'screen Rapid ELISA Test Kits ..... 46
  - Other Kits to Detect Veterinary Drug Residues and Additives ..... 46
- BIOGENIC AMINE ..... 47**
  - Histamine Kits ..... 47
- ANIMAL SPECIES ..... 48**
  - DNAnimal Kits-Multiple Targets ..... 50
  - DNAnimal Screen Kits ..... 50
  - DNAnimal Ident Kits ..... 50
- ENVIRONMENT AND WATER ..... 52**
  - Algal Toxins ELISA Plate & Tube Test Kits ..... 54
  - ABRAXIS® Algal Toxins Dipstick Test Kits ..... 54
  - ABRAXIS® Algal Toxins Standards ..... 54
  - ABRAXIS® Algal Toxins QC Materials ..... 55
  - ABRAXIS® Algal Toxins Related Products ..... 55
  - ABRAXIS® Industrial Chemicals/Hydrocarbons ..... 56
  - ABRAXIS® Markers for Bioactivity ..... 56
  - ABRAXIS® Acrylamide ..... 56
  - ELISA Plate, Tube & Test Strip Readers & Equipment ..... 56
  - ABRAXIS® Pesticides ..... 57
  - ABRAXIS® Pesticides Related Products ..... 57
  - ABRAXIS® Glyphosate ..... 57
  - ABRAXIS® Glyphosate Related Products ..... 57

- LIFE SCIENCES / R&D ..... 58**
  - AbraMag® Magnetic Purification Kits ..... 58
  - Magnetic Separator Racks ..... 58
  - AbraMag® Magnetic Beads ..... 58
- VETERINARY DIAGNOSTICS ..... 60**
  - VET Allergy Diagnostic Solution ..... 62
  - Immunoassays ..... 63
  - MULTISPECIES ..... 64
  - PORCINE ..... 65
  - RUMINANTS ..... 66
  - CANINE ..... 70
  - FELINE ..... 71
  - RABBIT ..... 71
  - AVIAN ..... 71
  - EQUINE ..... 72
  - Molecular Assays, Real-Time PCR ..... 73
  - Real-Time PCR Assays ..... 74
  - PCR Kits for CATTLE ..... 74

- PCR Kits for SMALL RUMINANTS ..... 74
- PCR Kits for SWINE ..... 75
- PCR Kits for POULTRY ..... 76
- PCR Kits for PETS ..... 76
- PCR Kits for EQUINE ..... 77
- PCR Kits for RABBIT ..... 77
- PCR Kits for AQUACULTURE ..... 77
- PCR Kits for MINK ..... 77
- INSTRUMENTS ..... 78**
  - ThunderBolt® ..... 80
  - The Bolt™ ..... 80
  - RapidScan ST5-W Lateral Flow Assay Reader ..... 81
  - GSD Absorbance 96 ELISA Reader ..... 81
  - GSD Auto-Pure 96 ..... 82
  - Real-time PCR System: AriaMX™ ..... 82
  - OT-2 Liquid Handler for BACGene Use ..... 83
- SERVICES ..... 84**

## Product Overview



Test Kits / Methods	ELISA	LFD	PCR	IAC	LFD Reader	ELISA Reader	ELISA Analyzer
Food Allergens	•	•	•		•	•	•
Food Pathogens	•		•			•	•
Food Viruses			•				
GMOs	•	•	•		•	•	
Mycotoxins	•	•		•	•	•	•
Vet Drug Residues	•					•	•
Animal Species			•				
Vet Diagnostics	•	•	•			•	•
Vitamin Analysis	•			•		•	
Pesticides	•	•			•	•	•
Environment & Water	•	•			•	•	•



# FIND THE BEST SOLUTION

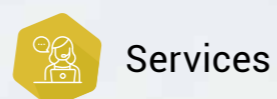
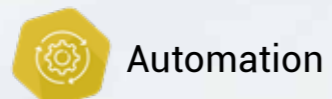
for your in-house testing operations

## Rapid testing technologies: a growing market

The on-site testing solutions market has seen significant growth over the past few years, including not only food and feed analysis but environmental and clinical samples as well.

The growth is attributed to the customers' need for fast and reliable test results as these in-house testing laboratories face mounting pressure to meet new regulatory and customer standards, all the while ensuring quality and the timely release of safe product.

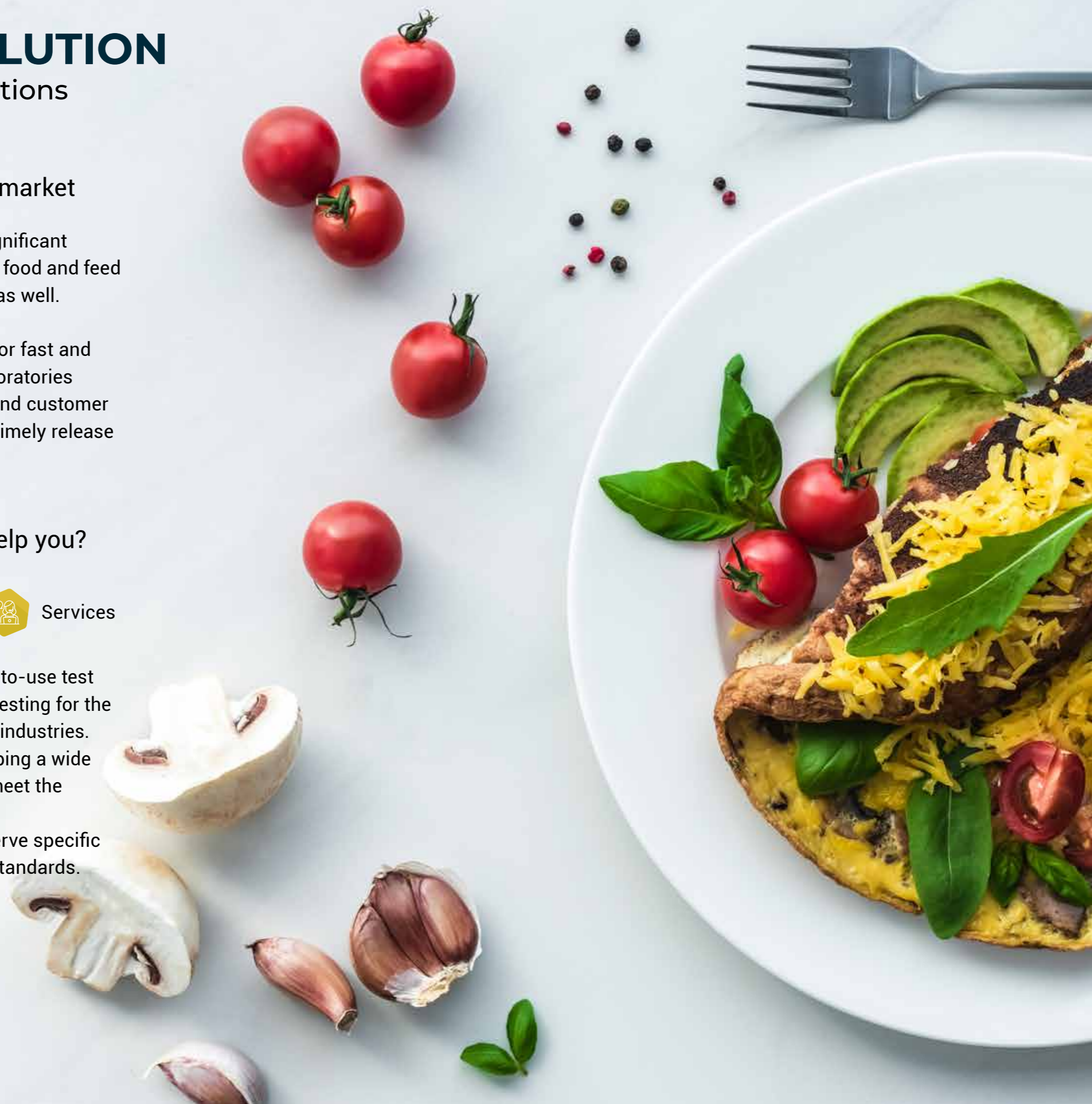
## How can Gold Standard Diagnostics help you?



We are a global provider of fast, reliable, and easy-to-use test kits and instruments in the fields of bioanalytical testing for the food, feed, environmental, biopharma, and clinical industries.

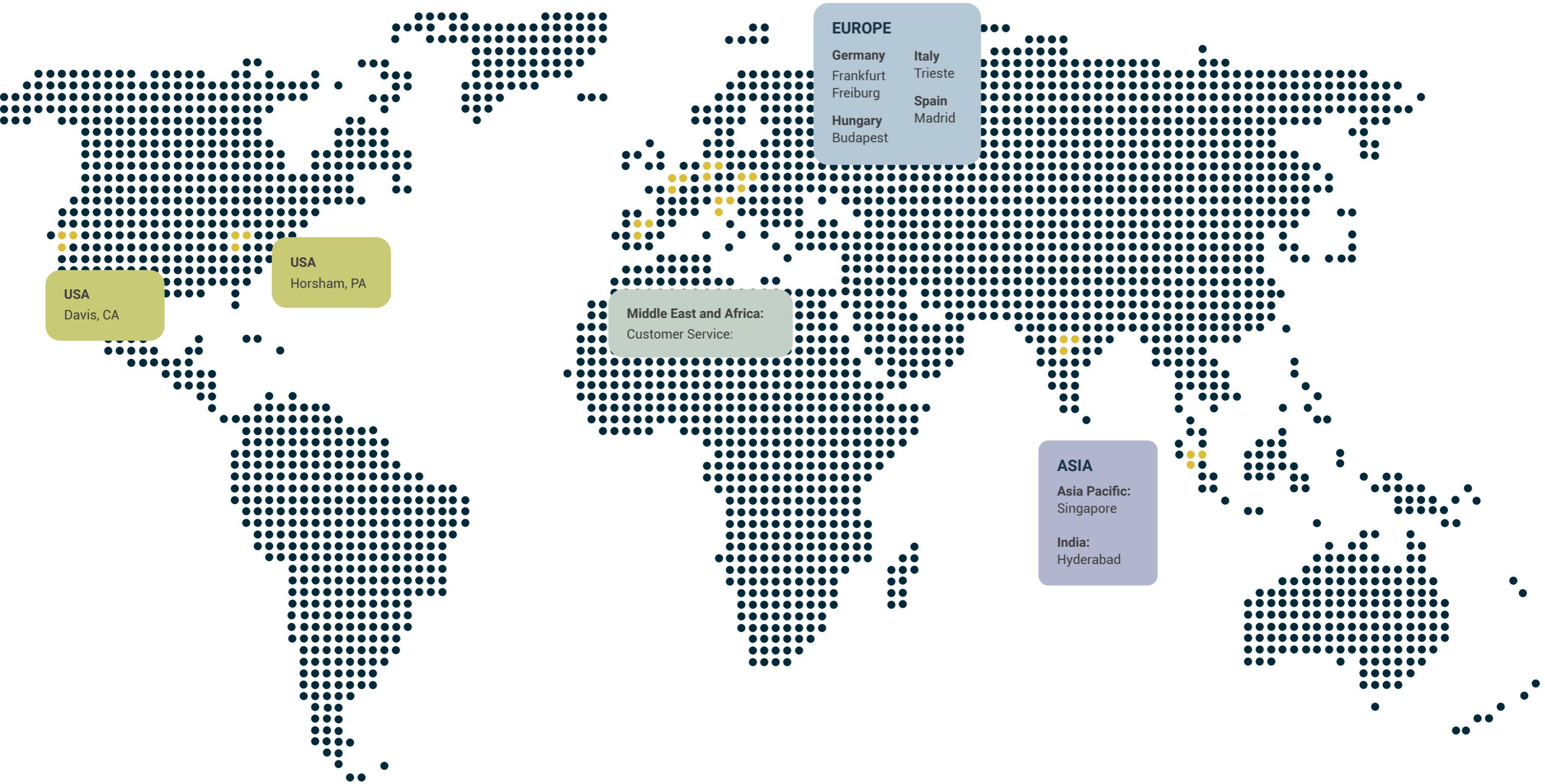
The in-house R&D teams have expertise in developing a wide range of innovative methods and applications to meet the testing needs of both research and industry.

Our experts are able to customize programs to serve specific needs with competitive pricing and high quality standards.



# WHERE WE ARE

Our entities serve more than 100 countries worldwide.





# ALLERGENS

Food allergens are proteins in food which can trigger allergic, sometimes even life-threatening, reactions in sensitised individuals. 90% of all food allergies are caused by the following eight common food categories: milk, eggs, peanuts, fish, shellfish, tree nuts, wheat and soy.

Managing food allergies usually means completely eliminating the allergenic proteins from one's diet, requiring strict traceability throughout the food production process, from raw materials to the final product. Beside EU Regulation No. 1169/2011, many other legislations worldwide require food manufacturers to label their products with all ingredients potentially capable of causing allergic reactions.

We provide the most comprehensive offering for food allergen rapid testing, including test kits, easy to use instruments, trainings and services, to suit your actual capabilities and needs.



## CUSTOMIZED SOLUTIONS FOR YOUR ALLERGEN TESTING NEEDS

### RAPID TEST KITS

#### SENSISpec ELISA Kits



Quick and sensitive method with low limits of detection.

Broad portfolio including AOAC approved Gluten R5 kit.

#### DNAllergen PCR Kits



Capable to detect specific allergens with no cross-reactivity.

#### SENSIStrip LFD Kits



New **PowerLine** LFD kits for the detection of the Hook effect. Get highly reliable results in 20 min.

### AUTOMATION & SERVICES

#### ThunderBolt® and The BOLT™ ELISA Analyzers



Automation for all the steps of any plate-based assay from premixing to final data handling. Validated for SENSISpec Allergen ELISA kits.

#### RapidScan ST5-W LFD Reader



Highly flexible, easy to use and accurate imaging platform for lateral flow assay analysis providing semi-quantitative results. Specifically designed for field and in-process testing.

#### Services

Maintenance and support; trainings; method development and validation (for ELISA kits on ThunderBolt® and The BOLT™).

## SENSISpec Allergen Detection ELISA Kits



Product	LOD (ppb)	Quantitation range	No. of wells	Article No.
SENSISpec ELISA Almond	200	0.4 - 10 ppm	96 48	HU0030001 HU0030025
SENSISpec ELISA Beta-Lactoglobulin	1.5	10 - 400 ppb	96 48	HU0030002 HU0030026
SENSISpec ELISA Buckwheat	60	0.06-0.35 ppm	96 48	HU0030144 HU0030145
SENSISpec ELISA Casein	30	0.2 - 6 ppm	96 48	HU0030003 HU0030027
SENSISpec ELISA Cashew	200	2 - 60 ppm	96 48	HU0030004 HU0030028
SENSISpec ELISA Coconut	400	2 - 30 ppm	96 48	HU0030005 HU0030029
SENSISpec ELISA Crustaceans (Tropomyosin)	0.9	20 - 400 ppb	96 48	HU0030006 HU0030030
SENSISpec ELISA Egg White	50	0.4 - 10 ppm	96 48	HU0030007 HU0030031
SENSISpec ELISA Fish (Parvalbumin)	1400	4 - 100 ppm	96 48	HU0030008 HU0030032
SENSISpec ELISA Gliadin/Gluten	300	2 - 60 ppm	96 48	HU0030009 HU0030033
SENSISpec ELISA Hazelnut	300	1 - 40 ppm	96 48	HU0030010 HU0030034
SENSISpec ELISA Lupin	200	2 - 30 ppm	96 48	HU0030011 HU0030035
SENSISpec ELISA Lysozyme	2	25 - 250 ppb	96 48	HU0030012 HU0030036
SENSISpec ELISA Macadamia nut	100	1 - 40 ppm	96 48	HU0030013 HU0030037
SENSISpec ELISA Milk	50	0.4 - 10 ppm	96 48	HU0030014 HU0030038
SENSISpec ELISA Molluscs (Tropomyosin)	1.7	10 - 400 ppb	96 48	HU0030015 HU0030039
SENSISpec ELISA Mustard	1000	2 - 60 ppm	96 48	HU0030016 HU0030040
SENSISpec ELISA Ovalbumin	4	25 - 500 ppb	96 48	HU0030017 HU0030041
SENSISpec ELISA Brazil nut	200	1 - 40 ppm	96 48	HU0030018 HU0030042
SENSISpec ELISA Peanut	100	1 - 40 ppm	96 48	HU0030019 HU0030043
SENSISpec ELISA Pecan nut	200	2 - 60 ppm	96 48	HU0030020 HU0030044
SENSISpec ELISA Pistachio	130	1 - 40 ppm	96 48	HU0030021 HU0030045
SENSISpec ELISA Sesame	200	2 - 30 ppm	96 48	HU0030022 HU0030046
SENSISpec ELISA Soy	16	40 - 1000 ppb	96 48	HU0030023 HU0030047
SENSISpec ELISA Total Soy Protein	200	2 - 36 ppm	96 48	HU0030075 HU0030076
SENSISpec ELISA Walnut	350	2 - 60 ppm	96 48	HU0030024 HU0030048

Spike solutions are available for all allergen ELISA kits.

## SENSISpec Gluten Detection ELISA Kits



Product	LOD (ppb)	Quantitation range	No. of wells	Article No.
SENSISpec INgezim Gluten R5 - AOAC certified	3000	3-200 ppm	96	30.GLU.K.2.
SENSISpec INgezim Gluten Quick	3000	3-200 ppm	96	30.GL2.K.2.
SENSISpec INgezim Hydrolyzed Gluten	250	0.25-200 ppm	48	30.GLH.K.2.
SENSISpec INgezim Gluten Semi Q	10000	10-800 ppm	32	30.GSQ.K.2.

## Supplementary Products



Product	Quantity	Article No.
SENSISpec Wash Buffer	60 ml	HU0030074
SENSISpec Extraction Additive	100 g	HU0030100
SENSISpec Ingezim Gluten Extraction Additive	110 ml 1 L	HU0030105 HU0030103

## SENSIStrip Lateral Flow Tests



Product	LOD Food matrix	LOD ( $\mu\text{g}/\text{cm}^2$ ) Surface	No. of tests	Article No.
SENSIStrip Almond	2.5 ppm	0.007 $\mu\text{g}/\text{cm}^2$	20	HU0030110
SENSIStrip Beta-Lactoglobulin	100 ppb	0.27 ng/cm <sup>2</sup>	20	HU0030111
SENSIStrip Casein	0.5 ppm	0.001 $\mu\text{g}/\text{cm}^2$	20	HU0030112
SENSIStrip Cashew	2.5 ppm	0.007 $\mu\text{g}/\text{cm}^2$	20	HU0030113
SENSIStrip Coconut	5 ppm	0.013 $\mu\text{g}/\text{cm}^2$	20	HU0030114
SENSIStrip Crustaceans (Tropomyosin)	25 ppb	0.2 ng/cm <sup>2</sup>	20	HU0030115
SENSIStrip Egg White	0.5 ppm	0.001 $\mu\text{g}/\text{cm}^2$	20	HU0030116
SENSIStrip Fish	6 ppm	16 ng/cm <sup>2</sup>	20	HU0030117
SENSIStrip Gluten	4 ppm	1.6 ng/cm <sup>2</sup>	20	HU0030118
SENSIStrip Gluten PowerLine	4 ppm	1.6 ng/cm <sup>2</sup>	20	HU0030134
SENSIStrip Hazelnut	2.5 ppm	0.007 $\mu\text{g}/\text{cm}^2$	20	HU0030119
SENSIStrip Lupin	0.3 ppm	0.13 ng/cm <sup>2</sup>	20	HU0030120
SENSIStrip Lysozyme	50 ppb	0.13 ng/cm <sup>2</sup>	20	HU0030121
SENSIStrip Macadamia nut	2.5 ppm	0.007 $\mu\text{g}/\text{cm}^2$	20	HU0030122
SENSIStrip Milk Protein	1 ppm	0.003 $\mu\text{g}/\text{cm}^2$	20	HU0030123
SENSIStrip Milk Protein PowerLine <b>NEW!</b>	Coming soon!			HU0030138
SENSIStrip Multi Tree Nut	N/A	0.16 $\mu\text{g}/\text{cm}^2$	20	HU0030136
SENSIStrip Mustard	2.5 ppm	0.007 $\mu\text{g}/\text{cm}^2$	20	HU0030125
SENSIStrip Ovalbumin	0.1 ppm	0.001 $\mu\text{g}/\text{cm}^2$	20	HU0030126
SENSIStrip Brazil nut	2.5 ppm	0.007 $\mu\text{g}/\text{cm}^2$	20	HU0030127
SENSIStrip Peanut	2.5 ppm	0.007 $\mu\text{g}/\text{cm}^2$	20	HU0030128
SENSIStrip Peanut PowerLine <b>NEW!</b>	5 ppm	0.013 $\mu\text{g}/\text{cm}^2$	20	HU0030137
SENSIStrip Pecan nut	2.5 ppm	0.007 $\mu\text{g}/\text{cm}^2$	20	HU0030129
SENSIStrip Pistachio	2.5 ppm	0.007 $\mu\text{g}/\text{cm}^2$	20	HU0030130
SENSIStrip Sesame	2.5 ppm	0.007 $\mu\text{g}/\text{cm}^2$	20	HU0030131
SENSIStrip Total Soy Protein PowerLine	2.5 ppm	0.007 $\mu\text{g}/\text{cm}^2$	20	HU0030135
SENSIStrip Total Soy Protein	2.5 ppm	0.007 $\mu\text{g}/\text{cm}^2$	20	HU0030132
SENSIStrip Walnut	2.5 ppm	0.007 $\mu\text{g}/\text{cm}^2$	20	HU0030133



## RapidScan ST5-W Lateral Flow Assay Reader



Product	Product description	Article No.
RapidScan ST5-W Lateral Flow Assay Reader	Portable instrument specifically designed for field and in-process testing applications requiring qualitative to semi-quantitative test results. Compatible with Gold Standard Diagnostics' allergen, GMO, glyphosate and algal toxins lateral flow tests.	LFRSCAN002
LFD Reader Adapter for allergen strips	Adapter for SENSIS <i>Strip</i> allergens LFDs, for use with RapidScan ST5-W LFD Reader	LFA0030001

## DNAllergen PCR Kits



Article No.	Product Name	Article No.	Product Name
HU0030189	DNAllergen Almond	HU0030194	DNAllergen Mustard
HU0030190	DNAllergen Celery	HU0030195	DNAllergen Oat
HU0030191	DNAllergen Fish	HU0030196	DNAllergen Peanut
HU0030192	DNAllergen Hazelnut	HU0030197	DNAllergen Sesame
HU0030193	DNAllergen Molluscs	HU0030198	DNAllergen Soy

## Allergen Control Materials



Product	To apply with Allergen ELISA Kits	Article No.
Allergen Control Material – <b>Key Allergens</b>	Beta-Lactoglobulin, Casein, Egg White, Gluten, Milk, Soy, Total Soy	HU0030140
Allergen Control Material – <b>Maritime</b>	Crustaceans, Fish, Molluscs	HU0030141
Allergen Control Material – <b>Seeds</b>	Lupin, Mustard, Sesame	HU0030143
Allergen Control Material – <b>Nuts</b>	Almond, Brazil nut, Cashew, Coconut, Hazelnut, Macadamia, Peanut, Pecan, Pistachio, Walnut	HU0030142

## SENSISwab Swabbing Solution



Product	Product description	No. of swabs	Article No.
SENSISwab kit	10 ml Swabbing solution, 5 Swabs, 5 Sample tubes	5	HU0030101
	10x5: multipack of 10 Swab kits	50	HU0030102







# VITAMIN ANALYSIS

Vitamins are essential nutrients for the growth, development, and maintenance of cells, tissues, and organs. Vitamins are classified as either water-soluble or fat-soluble. For humans, there are 13 vitamins: 4 fat-soluble (A, D, E, and K) and 9 water-soluble (8 B vitamins and vitamin C). These nutrients are typically obtained through the consumption of food or dietary supplements, which are subject to vitamin testing in order to meet specific labeling requirements.

We offer ELISA kits and immunoaffinity columns (IAC) for the detection and purification of the following vitamins: Biotin (Vitamin H or Vitamin B7), Folic acid and Vitamin B12.

## SENSISpec ELISA Vitamin Kits



Product name	LOD (ppb)	Quantitation range	No. of wells	Article No.
SENSISpec ELISA Vitamin B12	Depends on the sample preparation	0,4-40 ng/ml	96	HU0030400
SENSISpec ELISA Biotin (Vitamin B7)	Depends on the sample preparation	1-25 ng/ml	96	HU0030401
SENSISpec ELISA Folic Acid	Depends on the sample preparation	4-400 ng/ml	96	HU0030402

## SENSIColumn Vitamin Immunoaffinity Columns



Product name	Product description	Quantity	Article No.
SENSIColumn IAC Biotin*	Determination of Biotin in vitamin tablets, liquid vitamin preparations, cell culture extracts etc.	3 ml x 50 columns	EFSA3175
SENSIColumn IAC Vitamin B12	Determination of Vitamin-B12 (Cyanocobalamin) in vitamin tablets, liquid vitamin preparations, cell culture extracts etc.	3 ml x 50 columns	BTCA3185
SENSIColumn IAC Folic Acid	Determination of folic acid in vitamin tablets, liquid vitamin preparations, cell culture extracts etc.	3 ml x 50 columns	BTFS3195
*FITC-streptavidin-conjugate	Conjugate	1 mg x 25 vials	FITC-SA-Kon



# FOOD PATHOGENS

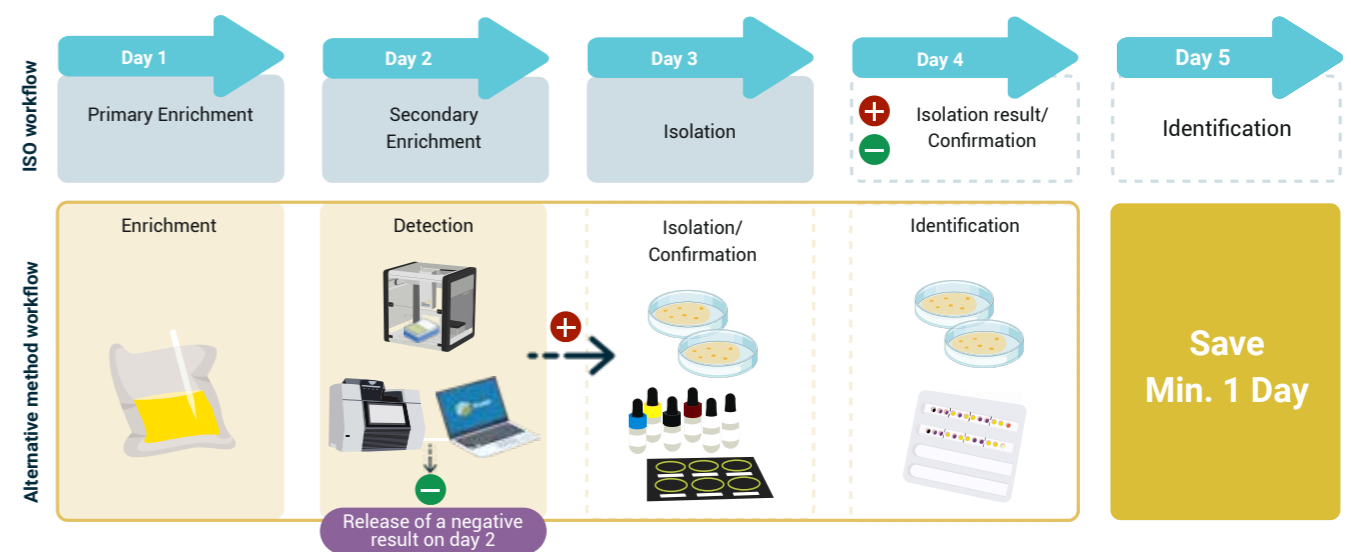
Foodborne illness is often caused by consuming food contaminated with bacteria and/or their toxins, parasites, viruses, chemicals, or other agents. The detection of these harmful food pathogens is essential in order to protect consumers against possible health consequences and to minimize risks and costs for the food industry.

## From Enrichment to Confirmation

Elevate your food safety standards with our cutting-edge pathogen testing solution! Our system is not only equipped with harmonized enrichment protocols for a wide variety of foods but it also comes with certifications according to NF validation by AFNOR certification and according to Performance Tested Methods<sup>SM</sup> (PTM) program for key pathogens such as *Salmonella* spp. and *Listeria* spp., including *L. monocytogenes*.

Save one day with applying our pathogen workflow!

- Use **BACGro™ Ultra Listeria Broth (BULB) enrichment** to accelerate your testing
- Unlock efficiency with our **OT-2 for a BACGene use automated solution**
- Expect negative result release in less than 24 hours, complemented by an effortless, automated data interpretation with **PURE**
- In the event of a PCR positive readout, benefit from our reliable confirmation and identification tools, such as **Latex or Biochemical tests**







## Solutions for Enrichment

### Enrichment Media for BACGene\*

Product	Quantity	Article No.
BACGro™ ULTRA Listeria Broth	5 kg	1705
BACGro™ ULTRA Listeria Broth	10 kg	1710
Actero™ Listeria Enrichment Media	500 g bottle	5613902001
Actero™ Listeria Enrichment Media	2 kg	5613902002
Actero™ Listeria Enrichment Media	10 kg	5613902010



## Solutions for Analysis

### Free DNA Removal

Product	Product description	No. of reactions	Article No.
PREraser BACGene	Elimination of free DNA from pathogen enrichments to be used in combination with BACGene kits	2 x 48 10 x 2 x 48	5123222301 5123222311

### BACGene Real-Time PCR Kits

Product	Product description	No. of reactions	Article No.
BACGene Salmonella spp.	Real-time PCR for the detection of <i>Salmonella</i> spp. AOAC-PTM (#121501), NF VALIDATION (EGS 38/01-03/15)	96 10 x 96	5123221801 5123221811
BACGene Salmonella Tranoroa	Real-time PCR for the identification of serovar <i>Salmonella enterica</i> subsp. <i>salmatae</i> serovar Tranoroa as a process control measure	48	5123222801
BACGene Listeria Multiplex	Real-time PCR for the detection of <i>Listeria monocytogenes</i> and <i>Listeria</i> spp. AOAC-PTM (#061701), NF VALIDATION (EGS 38/05-03/17)	96 10 x 96	5123221901 5123221911
BACGene Listeria spp.	Real-time PCR for the detection of <i>Listeria</i> spp. AOAC-PTM (#061702), NF VALIDATION (EGS 38/02-01/17)	96 10 x 96	5123222101 5123222111
BACGene Listeria <i>monocytogenes</i>	Real-time PCR for the identification of <i>Listeria monocytogenes</i> . AOAC-PTM (#061703), NF VALIDATION (EGS 38/03-01/17)	96 10 x 96	5123222001 5123222011
BACGene <i>E.coli</i> O157:H7	Real-time PCR for the identification of <i>E. coli</i> O157:H7. AOAC-PTM (#22002), NF VALIDATION (EGS 38/06-11/19)	96 10 x 96	5123222701 5123222711
BACGene Mplex STEC Screen	Real-time PCR for the detection of STEC virulence genes <i>stx1</i> , <i>stx2</i> and <i>eae</i> . AOAC-PTM (#22003)	96 10 x 96	5123223001 5123223011
BACGene Mplex STEC SEROtype1	Real-time PCR for the identification of three of the Top6 STEC serogroups. (O111, O103, O26) AOAC-PTM (#22003)	48	5123223101
BACGene Mplex STEC SEROtype2	Real-time PCR for the identification of three out of the Top6 STEC serogroups. (O145, O121, O45) AOAC-PTM (#22003)	48	5123223201

### OT-2 Liquid Handler for BACGene Use

Product	Product description	Article No.
OT-2 Starter package	OT-2 liquid handler including respective modules and pipettes to run BACGene workflow in an automated setup.	HU0060910
P20 - 20 µL tip box (96)	Filter tips for P20 usage	HU0060906
P300 - 200 µL tip box (96)	Filter tips for P300 usage	HU0060907
Service Package	Yearly maintenance checks	HU0060908



## BACGene Accessory Items

Product	Quantity	Article No.
MicroAmp Cap Installing Tool for use with BACGene kits for PCR or for lysis		5613900401
Domed caps for Lysis Plate (DNA extraction), 300 x 8 cap strips	300 x 8 cap strips	5613900301
Yellow PCR Support Grids, pack with 8 grids	8 grids	5617702208
Blue PCR Support Grids, pack with 8 Grids	8 grids	5617702209
Optical caps, for use with PCR plate, 1 bag with 120 strips	120 strips	5627710010
Blue cooling block 96 well for lysis		5613900501
PCR rack – yellow, 1x96, lid included		5613901301
Lysis rack – blue, 1x96, lid included		5613901401



## Solutions for Confirmation

### Microgen Biochemical Identification Kits

A range of simple, reliable, bacterial identification systems for food industry. Identify the pathogen grown in plates, based on a change of colour of the system.

Product	Description	Article No.
Microgen Listeria-ID	Identification system for <i>Listeria</i> spp., 20 tests	MID67
Microgen GN-ID A	Identification system for commonly encountered Enterobacteriaceae, 60 tests	MID64
Microgen GN-ID B	Identification system for commonly encountered Enterobacteriaceae and Oxidase positive, 24 tests	MID65



## Solutions for Sampling

### Microgen Path-Chek Kits

Easy-to-use tests for pathogen detection and food residues from work surfaces and the processing environment. Ensure your regular cleaning processes with this rapid and cost effective solution.

Product	Description	Article No.
Path-Chek Listeria	Specific media swab-tubes for the detection of <i>Listeria</i> spp. in surfaces, 100 units	PC080
Path-Chek Salmonella	Specific media swab-tubes for the detection of <i>Salmonella</i> spp. in surfaces, 100 units	PC020
Path-Chek Coliforms	Specific media swab-tubes for the detection of Coliforms in surfaces, 100 units	PC010
Path-Chek Swabs	Pre-moistened swab, for use in combination of the Path-Chek identification media tests, 100 units	PCS100
Path-Chek Protein	Rapid test for the detection of food residues from environmental surfaces or processing equipment, 50 units, 100 tests	PC006
Path-Chek Heat Bath	Thermal Bath for laboratory incubations, Temp. range: 5-100°C	PC-HB1

### Microgen Latex Agglutination Kits

Confirmation of pathogenic bacteria in only two minutes. Identification of colonies grown in a selective media with an easy-to-use but highly sensitive and specific solution.

Product	Description	Article No.
Microgen Legionella Latex	Rapid latex agglutination test for the confirmation of presumptive <i>Legionella</i> colonies, 50 units	M45
Microgen Campylobacter Latex*	Rapid latex agglutination test for the confirmation of presumptive <i>Campylobacter</i> colonies, 50 units	F46
Microgen Salmonella Latex	Rapid latex agglutination test for the confirmation of presumptive <i>Salmonella</i> colonies, 50 units	F42
Microgen Staphylococcus Latex	Rapid latex agglutination test for the confirmation of presumptive <i>Staphylococcus</i> colonies, 50 units	M43

\*will be launched soon



## 0157 and non-0157 STEC Identification

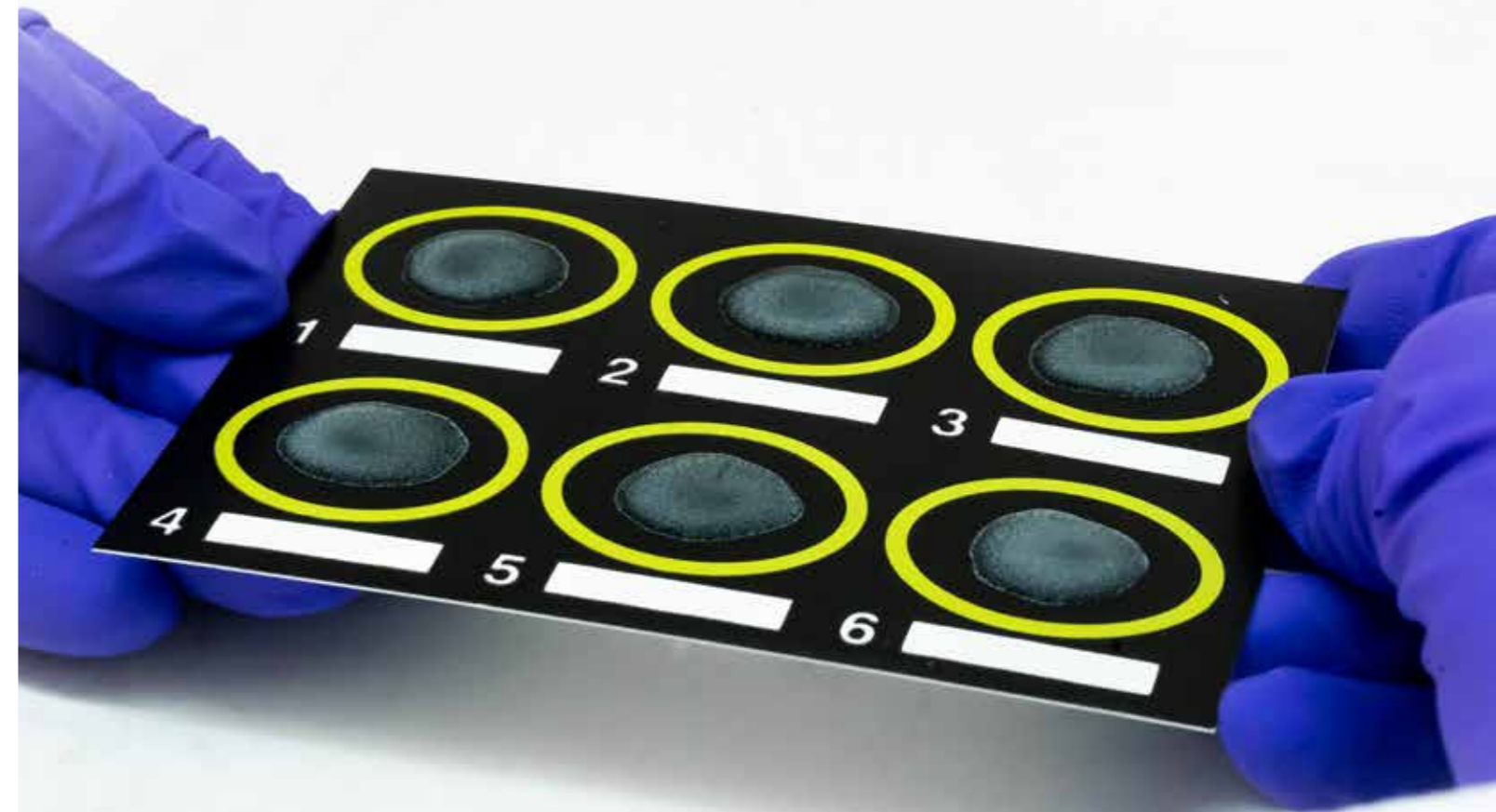
Whether your needs are food safety, compliance, quality assurance, or research, *E. coli* test kits and antibodies provide an extended offering of affordable test solutions for numerous formats such as ELISA, western blot, lateral flow, agglutination, immunoseparation, flow cytometry, and immunofluorescence.

Product	Product Format	Quantity	Article No.
<i>E. coli</i> O26	Latex Agglutination	50 tests	541000
<i>E. coli</i> O45	Latex Agglutination	50 tests	541010
<i>E. coli</i> O103	Latex Agglutination	50 tests	541020
<i>E. coli</i> O104:H4*	Latex Agglutination	50 tests	541060
<i>E. coli</i> O111	Latex Agglutination	50 tests	541030
<i>E. coli</i> O121	Latex Agglutination	50 tests	541040
<i>E. coli</i> O145	Latex Agglutination	50 tests	541050
<i>E. coli</i> O157:H7	Latex Agglutination	50 tests	541070

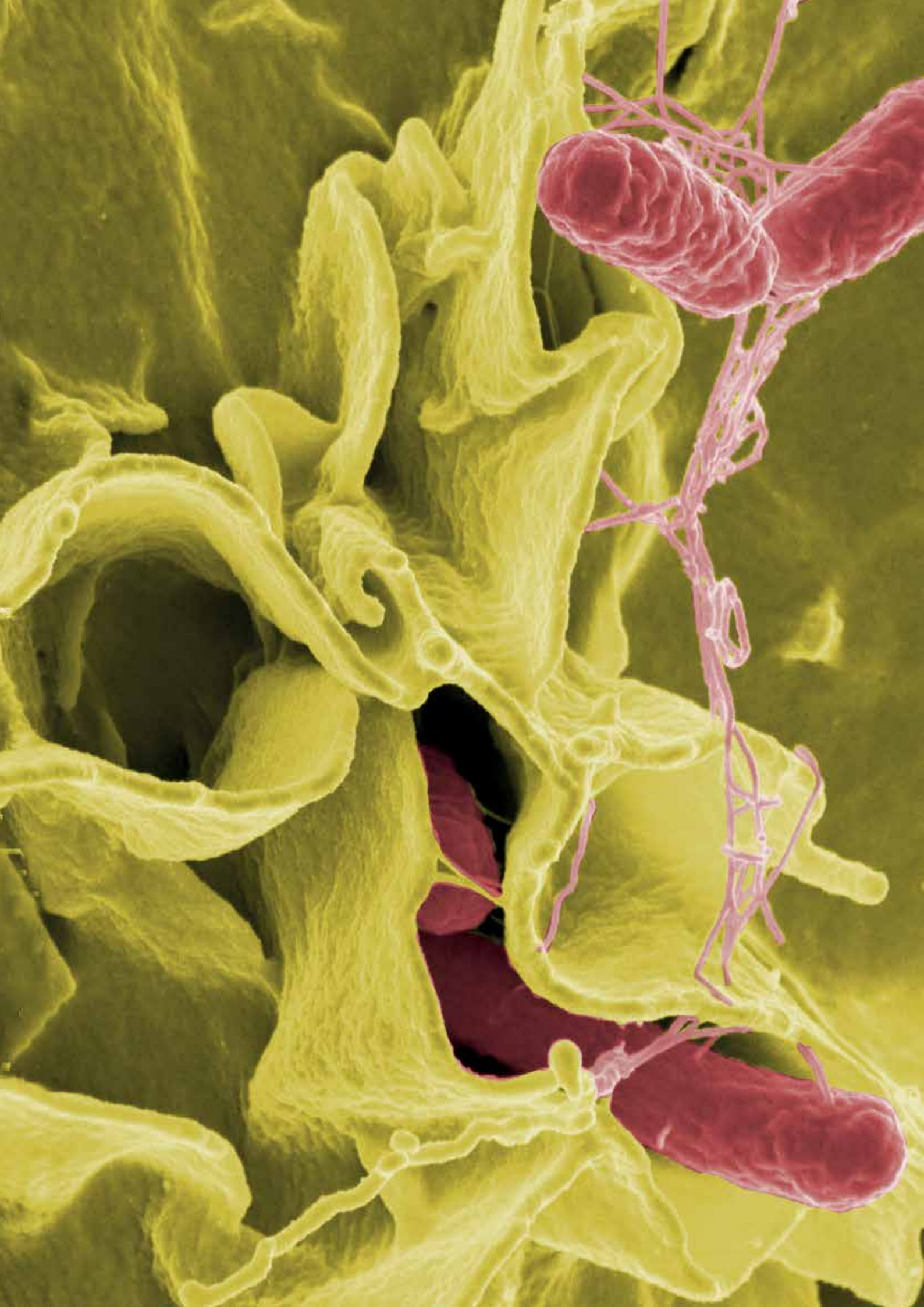
## IMS Beads for the use with BACGene *E. coli* STEC Solution

Product	Product Format	Quantity	Article No.
<i>E. coli</i> O26	Immunomagnetic Beads	2 ml	5623723601
<i>E. coli</i> O45	Immunomagnetic Beads	2 ml	5623723501
<i>E. coli</i> O103	Immunomagnetic Beads	2 ml	5623723401
<i>E. coli</i> O111	Immunomagnetic Beads	2 ml	5623723301
<i>E. coli</i> O121	Immunomagnetic Beads	2 ml	5623723201
<i>E. coli</i> O145	Immunomagnetic Beads	2 ml	5623723101
<i>E. coli</i> O157:H7	Immunomagnetic Beads	2 ml	5623723001

\*Minimum order quantity: 5 kits







# FOODBORNE VIRUSES

Due to a large number of viral food-related outbreaks, the detection of viruses in food is an important issue in food safety. Oftentimes even low concentrations of a virus can lead to severe health consequences, such as gastrointestinal or liver infections.

## VIRSeek Solution: Viral Foodborne Pathogen Detection

The VIRSeek Solution offers an all-inclusive, ISO-15216 compliant workflow from the RNA extraction to the specific detection of norovirus genogroup I, norovirus genogroup II and hepatitis A virus. In addition, the process control murine norovirus (MNV) ensures the monitoring of the RNA isolation procedure.

Each of the VIRSeek Solution kits can be used individually or as part of the comprehensive workflow validated for Agilent AriaMx™ and Bio-Rad CFX96™ (Standard and Deep Well).

## VIRSeek Qualitative Real-Time RT-PCR



Product	Product description	No. of reactions	Article No.
VIRSeek Food Norovirus Genogroup I (NoVGI)	Real-time RT-PCR rapid detection of Norovirus Genogroup I (NoVGI) in food samples.	48	5728200201
VIRSeek Food Norovirus Genogroup II (NoVGII)	Real-time RT-PCR rapid detection of Norovirus Genogroup II (NoVGII) in food samples.	48	5728200301
VIRSeek Food Hepatitis A Virus (HAV)	Real-time RT-PCR rapid detection of Hepatitis A virus (HAV) in food samples.	48	5728200101
VIRSeek Food Hepatitis E Virus (HEV)	Real-time RT-PCR kit for rapid detection of Hepatitis E virus (HEV) in food samples.	48	5728200501

## VIRSeek RNA Extraction

Product	Product description	No. of reactions	Article No.
VIRSeek RNAExtractor Food	Manual extraction of viral RNA via silica-coated magnetic beads from different food products (incl. soft fruit, leaf, stem and bulb vegetables, bottled water and bivalve molluscan shellfish) in alignment with ISO requirements.	48 x 500 µl or 96 x 250 µl sample input volume	5524401501

## VIRSeek Food Process Control

Product	Product description	No. of reactions	Article No.
VIRSeek Murine Norovirus (MNV) Process Control	Real-time RT-PCR kit for rapid detection of Murine Norovirus MNV. Virus/positive control included.	48	5728200401

*In case you are looking for SARS-CoV-2 detection in wastewater samples, please reach out to us.*





# MYCOTOXINS

Mycotoxins are toxic secondary metabolites produced by moulds, which grow on a variety of different crops and foodstuffs such as cereals, nuts, spices, dried fruits, apples and coffee beans. Mycotoxins pose a health threat to humans, pets and livestock, potentially causing a number of adverse health effects. It's not only plant-based foods that are at risk; milk may also have a presence of aflatoxin M1, the concentration of which depends on the aflatoxin ingested by the dairy cows through their foodstuffs.

We provide comprehensive solutions for mycotoxin screening, from on-site early detection by rapid tests to a variety of cost-efficient, high-throughput ELISA kits and analyzers, and even clean-up devices for laboratories performing confirmational verifications through instrumental analysis. Our on-field trainings and R&D services to customize, verify and validate our customers' applications complete the product offering.

## FROM FARM TO LAB: OUR TECHNOLOGIES SUPPORT YOUR ROUTINE



### TEST KITS

#### Lateral Flow Kits

- Lab-in-a-hand SENSIStrip LFD kits

#### ELISA Assays

- Cost-efficient B ZERO® ELISA test kits
- Harmonized and rapid Celer® ELISA test kits
- Water-based H2 ELISA test kits
- High sensitivity I'screen ELISA test kits



### INSTRUMENTS & AUTOMATION

#### • RapidScan ST5-W LFD Reader

Highly flexible, easy-to-use and accurate imaging platform for mycotoxins, pesticides, allergens and GMO screening

#### • GSD Absorbance 96 ELISA Reader

The most compact plate reader with easy plug-and-play feature

#### • ThunderBolt® and The BOLT™ ELISA Analyzers

Automation for all the steps of any plate-based assay, Validated for B ZERO® and Celer® ELISA kits



### CLEAN UP DEVICES

#### SENSIColumn Immunoaffinity Columns

- Extensive portfolio of mycotoxin IACs for the majority of regulated substances
- Simple and reliable sample purification solutions, applicable to various matrices



### SERVICES

#### R&D customized development

- Trust our 30-year experience in the mycotoxins field and ask our experts for customised solutions
- Technical trainings and maintenance for instruments



## SENSIStrip Lateral Flow Tests



Article No.	Product Name	Target	No. of Tests	Applications
R.30.AFL.K42/20	SENSIStrip AFLA	Total aflatoxin	20	Corn, Barley, Sorghum, Oat Groats, Wheat, Brown Rice, Soybeans, Cow Feed, Peanut, Corn Gluten Meal
R.30.AFL.K42/100	SENSIStrip AFLA	Total aflatoxin	100	
R.30.DON.K42/20	SENSIStrip DON	Deoxynivalenol	20	Corn, Corn Germ, Corn Gluten Meal, Wheat, Whole Oats, Durum Wheat, Sorghum, Brown Rice, Barley, Rye
R.30.DON.K42/100	SENSIStrip DON	Deoxynivalenol	100	

## SENSIStrip Equipment and Accessories



Article No.	Product Name	Description
LFRSCAN002	RapidScan ST5-W Lateral Flow Assay Reader	Gold Standard Diagnostics strip reader, suitable for allergens, GMO, pesticides and mycotoxins digital analysis
LFA004002	RapidScan Reader Adapter for SENSIStrip Mycotoxin Strips	Adapter for RapidScan to enable the use with mycotoxin strips
LFRINC002	MiniT Incubator for SENSIStrip Mycotoxin Strips	Compact incubator to standardize the performance in any environmental conditions
HU0040302	Mini-Centrifuge	Optional item to speed up the sample preparation: compact mini-centrifuge for 1.5-2 ml tubes equipped with adapter, fixed speed at 10,000 rpm
R.00.049.3923002	Extraction powder for 50g, compatible with SENSIStrip Mycotoxin Strips, 10 det	Extraction powder bags to analyse 50 g following the USDA – FGIS requirements

## B ZERO® Quantitative ELISA Test Kits



Product	Target	Product description	No. of wells	Article No.
B ZERO® AFLA B1	Aflatoxin B1	Methanol-based assay for the specific detection of aflatoxin B1 in corn, sorghum, high moisture corn, silage and mash, feed, hazelnuts, pistachios, peanuts, almonds, raisins, figs, DDGS, cottonseed, soy, soybean meal.	48	HU0040025
B ZERO® AFLA M1	Aflatoxin M1	Sensitive assay for the quantitative research of aflatoxin M1 in milk and dairy products with compliant sensitivity to EU regulation.	192	HU0040043
			96	HU0040003
			48	HU0040023
B ZERO® DON v2	Deoxynivalenol	Methanol-based assay for the detection of deoxynivalenol in cereals, feed, DDGS with shared sample preparation with other B ZERO assays	48	HU0040028
B ZERO® ZEA	Zearalenone	Methanol-based assay for the detection of zearalenone in cereals, feed and DDGS	48	HU0040027
B ZERO® FUMO	Fumonisin	Methanol-based assay for the detection of fumonisins in maize and feed.	48	HU0040034
B ZERO® OCHRA	Ochratoxin	Methanol-based assay for the detection of ochratoxin in cereals	48	HU0040035
B ZERO® T2	T-2 and HT-2 toxins	Methanol-based assay for the detection of both T-2 and HT-2 metabolite in cereals and feed	48	HU0040036

## Celer® Quantitative ELISA Test Kits



Product	Target	Product description	No. of wells	Article No.
Celer® AFLA B1	Aflatoxin B1	Methanol-based assay for the specific detection of aflatoxin B1 in corn, sorghum, high moisture corn, silage and mash, feed, hazelnuts, pistachios, peanuts, almonds, raisins, figs, DDGS, cottonseed, soy, soybean meal.	96	HU0040004
			192	HU0040044
Celer® AFLA	Aflatoxins	Methanol-based assay for the detection of total aflatoxins in cereals, corn germ, feed, cottonseed, nuts, dried fruits, paprika, chilli, ginger.	96	HU0040011
			192	HU0040051
Celer® AFLA HS	Aflatoxins	High sensitivity methanol-based assay for the detection of total aflatoxins in maize, corn germ, corn silage, corn gluten meal, sorghum, brown rice, soybean meal, bovine feed, feed, DDGS, pistachio, peanut, cottonseed.	96	HU0040097
			192	HU0040098
Celer® DON v3	Deoxynivalenol	Methanol-based assay for the detection of deoxynivalenol in cereals, feed, DDGS	96	HU0040009
			192	HU0040049
Celer® ZEA	Zearalenone	Methanol-based assay for the detection of zearalenone in cereals, feed and DDGS	96	HU0040006
			192	HU0040046
Celer® FUMO	Fumonisin	Methanol-based assay for the detection of fumonisins in maize and feed.	96	HU0040012
			192	HU0040052
Celer® OCHRA	Ochratoxin	Methanol-based assay for the detection of ochratoxin in cereals	96	HU0040013
			192	HU0040063
Celer® T2	T-2 and HT-2 toxins	Methanol-based assay for the detection of both T-2 and HT-2 metabolite in cereals and feed	96	HU0040010
			192	HU0040050

## I'screen Quantitative ELISA Test Kits



Product	Target	Product description	No. of wells	Article No.
I'screen AFLA M1	Aflatoxin M1	Assay for detecting aflatoxins M1 in milk, yoghurt and cheese. LOD: Raw Milk 0.005 ppb, Milk Powder 0.05 ppb, Cheese 0.037, Firm cheese 0.12, Yoghurt 0.12	96	HU0040002
			192	HU0040042
I'screen AFLA M1 milk	Aflatoxin M1	Assay for detecting aflatoxins M1 in milk. LOD: Raw Milk 0.005 ppb, Milk Powder 0.05 ppb	96	HU0040001
			192	HU0040041

## Water-based Quantitative ELISA Test Kits



Product	Target	Product description	No. of wells	Article No.
H2AFLA	Aflatoxin	Solvent-free assay for the quantitative detection of total aflatoxins in maize, corn germ, wheat, rice, sorghum, barley, peanut, copra, pistachio, walnut, almond, soybean meal and feed.	96	HU0040055
H2DON	Deoxynivalenol	Solvent-free assay for the quantitative detection of total deoxynivalenol (vomitoxin) in cereals, corn, gluten meal, swine feed, DDGS, soybean meal, malted barley, wheat bran and middlings, and rye.	96	HU0040017

## ABRAXIS® Patulin Test Kits



Product	Product description	Article No.
Patulin, ELISA, 96-test	Assay for the quantitative detection of patulin in contaminated samples. Test range: 7.0 to 300 ppb	500106
Patulin 1X6, ELISA, 96-test	As 500106, but this configuration allows for 6 separate runs	500110
Patulin Standard & Control Set	Additional product to Patulin ELISA	301102
Patulin Derivatization Set	Additional product to Patulin ELISA	301103
Patulin 10X Diluent	Patulin 10X Sample Diluent/Standard Diluent	301004
ABRAXIS® Patulin Strip Test	Test Kit Range – 0.08 ppb to 0.90 ppb (in buffer)	500130
	ABRAXIS® Test Strip Cassette available for result interpretation with the RapidScan ST5-W Lateral Flow Assay Reader	(5 Test) 500135
		(20 Test)

## SENSIColumn Immunoaffinity Columns



Product	Product description	Quantity	Article No.
SENSIColumn IAC Aflatoxin M1	Immunoaffinity columns that retain aflatoxin M1	3 ml x 50 columns	EFAFM3115
SENSIColumn IAC Ochratoxin	Clean-up of commodity extracts of food and feed samples containing ochratoxin A/B	3 ml x 50 columns	EFOT3125
SENSIColumn IAC Ochratoxin SMART	Specially designed low cost immunoaffinity column with reduces loding capacity for ochratoxin purification.	3 ml x 50 columns	EFOTS3125
SENSIColumn IAC Deoxynivalenol	Immunoaffinity columns that retain deoxynivalenol and separate it from the other substances present in the sample.	3 ml x 50 columns	EFD03135
SENSIColumn IAC Fumonisin	Immunoaffinity columns that retain fumonisins and separate them from the other substances present in the sample.	3 ml x 50 columns	EFFU3145
SENSIColumn IAC Zearalenone	Immunoaffinity columns that retain zearalenone and separate it from the other substances present in the sample.	3 ml x 50 columns	EFZE3155
SENSIColumn IAC Zearalenone SMART	Specially designed low cost immunoaffinity column with reduces loding capacity for ochratoxin purification.	3 ml x 50 columns	EFZES3155
SENSIColumn IAC T2/HT2	Immunoaffinity columns that retain T2 toxin and separate it from the other substances present in the sample.	3 ml x 50 columns	EFTE3165
SENSIColumn IAC Combi Afla+Ochra	Clean-up of commodity extracts of food and feed samples containing aflatoxins and ochratoxins	3 ml x 50 columns	EFCA3215
SENSIColumn IAC Combi Afla+Ochra+Zeara	Clean-up commodity extracts of food and feed samples containing aflatoxins, ochratoxins and zearalenon	3 ml x 50 columns	EFCZ3225
SENSIColumn IAC Combi Deoxinivalenol+Zearalenone	Clean-up of commodity extracts of food and feed samples containing deoxynivalenol and zearalenon	3 ml x 50 columns	EFCD3235
SENSIColumn IAC Combi AOZDFT all in one for LC-MS/MS	Simultaneous extraction of aflatoxins, ochratoxins, zearalenon, deoxynivalenol, fuminisins and T2-Toxin in food and feed stuffs	3 ml x 50 columns	EFCM3265
SENSIColumn IAC Ergot Alkaloids	Clean-up of commodity extracts of food and feed samples containing 12 priority ergot alkaloids	3 ml x 50 columns	EFLS3275

## Supplementary Products



Product	No. of tests / Quantity	Article No.
Mycotoxin Extraction Solution A	500 ml	HU0040103
Milk diluent	12 ml	HU0040101
Extraction Buffers for Afla M1 in cheese samples	12 ml (Milk diluent) 20 ml (Extraction buffer)	HU0040102
Enzyme conjugate for Celer® AFLA B1 and B ZERO® AFLA B1	14 ml	HU0040104
Enzyme conjugate for Celer® DON v3 & B ZERO DON v2	14 ml	HU0040105
Enzyme conjugate for Celer® AFLA	14 ml	HU0040106
Enzyme conjugate for Celer® ZEA & B ZERO ZEA	14 ml	HU0040107
Enzyme conjugate for Celer® FUMO & B ZERO FUMO	14 ml	HU0040108
Enzyme conjugate for Celer® T2 & B ZERO T2	14 ml	HU0040109
Enzyme conjugate for Celer® OCHRA & B ZERO OCHRA	14 ml	HU0040110
Standard curve set for I'screen AFLA M1 milk	7 x 1,5 ml	HU0040111
Aflatoxin M1 supplementary standards for I'screen AFLA M1 and I'screen AFLA M1 milk	2 x 1,5 ml	HU0040112
Enzyme conjugate for Celer® AFLA HS	14 ml	HU0040099
Enzyme Conjugate for H2DON	14 ml	HU0040120







# GENETICALLY MODIFIED ORGANISMS (GMO)

Cultivation of genetically modified (GM) crops has increased significantly around the globe over the years. This increase in production has been combined with a complex and ever evolving global regulatory approval process for GM products, therefore requiring the testing of food and agricultural products for genetically modified content in order to facilitate international trade.

GMO analysis can be performed in the field or in a testing laboratory and determination of the appropriate test method is dependent on the nature of the sample, the required level of sensitivity of the assay, and the intended market for the product.

We offer a broad range of GMO testing products that cover both the rapid onsite / field testing as well as comprehensive molecular analysis.

## GMO Testing with Real-time PCR

Our GMO testing portfolio is adapted to the volatile and current market situation and the global GMO planting and approval situation of GMOs. Real-time PCR kits for GMO testing are validated on various cyclers and are available for screening, identification and quantification.

Real-Time PCR Kits:

- **GMOScreen**: modular toolbox of simplex and multiplex assays for GMO screening
- **GMOIdent**: identification or exclusion of GMOs
- **GMOQuant**: quantitative to quantitate the GMO content



## ELISA Kits and Lateral Flow Devices for GMO Detection

The ELISA test kits provide an accurate and reliable solution to verify the presence or the absence of inserted trait in individual leaf, seed or bulk grain.

Our lateral flow devices enable a rapid on-site GMO detection in cotton, corn, soybean and mustard / canola.



### RapidScan ST5-W LFD Reader for GMO Testing

We offer a quick and easy-to-use protein-based testing method to identify genetically-modified raw ingredients like corn, soybean and canola before they are processed into a final product. The reader provides an easy on-site quantitative interpretation of the results in only 10 min.



## SpeciesScreen & SpeciesIdent Kits



Qualitative real-time PCR kits for plant species screening and identification.

Kit	Product Description	IPC	Quantity	Cat No
SpeciesScreen RT Plant IPC (LR/HR)	Detection of general plant species DNA	+	96 rxns	5421229401
SpeciesIdent RT Soy IPC (LR)	Detection of soybean species DNA	+	96 rxns	5421232001
SpeciesIdent RT Corn/Maize IPC (LR)	Detection of corn/maize species DNA	+	96 rxns	5421229901
SpeciesIdent RT IPC (LR) Rapeseed	Detection of rapeseed/canola species DNA	+	96 rxns	5421234101
SpeciesIdent RT Cotton IPC (LR)	Detection of cotton species DNA	+	96 rxns	5421234001
SpeciesIdent RT IPC (LR) Rice	Detection of rice species DNA	+	96 rxns	5421234201
SpeciesIdent RT CaMV IPC (LR/HR)	Detection of Cauliflower Mosaic Virus (CaMV) species DNA	+	96 rxns	5421229701
SpeciesIdent RT Agrobacterium tumefaciens IPC (LR)	Detection of Agrobacterium tumefaciens species DNA	+	96 rxns	5421229801
SpeciesIdent RT IPC (LR) Linseed	Detection of linseed/flax species DNA	+	96 rxns	5421234401
SpeciesIdent RT IPC (LR) Tomato/Potato	Detection of tomato and potato species DNA	+	96 rxns	5421234301

## GMOScreen Kits – Detection of Multiple Targets

Qualitative real-time PCR kits for GMO screening detecting multiple targets per tube. Please note that depending on the cyclor, either a low rox (LR) or no rox (NR) kit should be used.

Kit	Product Description	IPC	Quantity	Cat No
GMOScreen RT IPC 35S/NOS/FMV	Detection of the CaMV 35S promoter, nos terminator and FMV promoter	+	96 rxns	5421220301 (LR) 5421220302 (NR)
GMOScreen RT IPC 35S/NOS	Detection of the CaMV 35S promoter and nos terminator	+	96 rxns	5421220001 (LR)
GMOScreen RT IPC 35S/NOS/ABII	Detection of the CaMV 35S promoter, nos terminator and AgroBorder II element	+	96 rxns	5421227101 (LR) 5421227102 (NR)
GMOScreen RT IPC ABI/ABII	Detection of the AgroBorder I and AgroBorder II element	+	96 rxns	5421226201 (LR)

## GMOScreen Kits – Detection of One Target

Qualitative real-time PCR kits for GMO screening detecting.

Kit	Product Description	IPC	Quantity	Cat No
GMOScreen RT IPC (LR) 35S Promoter	Detection of the CaMV 35S promoter	+	96 rxns	5421228501
GMOScreen RT IPC (LR) NOS	Detection of the nos terminator	+	96 rxns	5421220201
GMOScreen RT IPC (LR/HR) FMV	Detection of the FMV promoter	+	96 rxns	5421220501
GMOScreen RT IPC (LR) AgroBorder II	Detection of the AgroBorder II element	+	96 rxns	5421228401
GMOScreen RT IPC (LR) AgroBorder I	Detection of the AgroBorder I element	+	96 rxns	5421227501
GMOScreen RT IPC (LR) EPSPS modification	Detection of the combination of the genetic elements CTP2/EPSPS CP4 gene	+	96 rxns	5421228801

\*IPC: internal positive control

Kit	Product Description	IPC	Quantity	Cat No
GMOScreen RT IPC (LR) bar	Detection of the bar gene	+	96 rxns	5421227601
GMOScreen RT IPC (LR) pat(syn)	Detection of the pat(syn) gene	+	96 rxns	5421227701
GMOScreen RT IPC (LR) ocs-terminator	Detection of the ocs terminator	+	96 rxns	5421228101
GMOScreen RT IPC (LR) cry1Ab/Ac	Detection of the cry1Ab/Ac gene	+	96 rxns	5421227901
GMOScreen 35S Terminator RT IPC (LR/HR)	Detection of the CaMV 35S terminator	+	96 rxns	5421227105
GMOScreen RT IPC (LR) nptII-gene	Detection of the nptII gene	+	96 rxns	5421228601
GMOScreen RT IPC (LR/HR+) 35S-NPT	Detection of the combination of the genetic elements 35S promoter/nptII gene	+	96 rxns	5421226901
GMOScreen RT IPC (LR/HR+) NOS-NPT	Detection of the combination of the genetic elements nos promoter/nptII gene	+	96 rxns	5421226801
GMOScreen RT IPC (LR) CsVMV	Detection of the combination of the genetic elements CsVMV promoter/pat(syn) gene	+	96 rxns	5421245101
GMOScreen RT IPC (LR) SAMS-ALS	Detection of the combination of the genetic elements SAMS promoter/als gene	+	96 rxns	5421226501



## GMO Testing Kits for Corn/Maize

### SMARTCheck GMO Corn

Use the following two qualitative multiplex assays for a broad coverage of GM corn events: GMOScreen RT 35S/NOS/ABII & GMOIdent RT IPC VCO-01981-5/DAS-40278-9/Ly038 Corn

## Qualitative and Quantitative Assays – Detection of Multiple Targets

Qualitative and quantitative real-time PCR kits for GMO maize/corn detecting multiple targets per tube. Please note that depending on the cyclor, either a low rox (LR) or no rox (NR) kit should be used.

Kit	Qualitative Assay	IPC	Quantity	Quantitative Assay	IPC	Quantity
GMOIdent RT IPC VCO-01981-5/ DAS-40278-9/Ly038	5421230501 (LR) 5421230502 (NR)	+	96 rxns			
GMOIdent RT IPC 3272/BT176/MON863	5421243601 (LR) 5421243602 (NR)	+	96 rxns			
GMOIdent RT IPC TC1507/MON810/NK603	5421243101 (LR) 5421243102 (NR)	+	96 rxns			
GMOIdent RT IPC T25/DP-004114-3/DAS-59122-7	5421244801 (LR) 5421244802 (NR)	+	96 rxns			
GMOIdent RT IPC MIR162/MIR604/5307	5421245501 (LR) 5421245502 (NR)	+	96 rxns			
GMOIdent RT IPC MON87460/MON89034/MON88017	5421243701 (LR) 5421243702 (NR)	+	96 rxns			
GMOIdent RT IPC MON87411/MON87403/MON87427	5421244101 (LR) 5421244102 (NR)	+	96 rxns			
GMOScreen RT IPC Event GA21/PMI-NOS	5421227103 (LR)	+	96 rxns			
GMOQuant RT IPC 35S/NOS				5125223801 (LR)	+	2 x 48 rxns
GMOQuant RT IPC 35S/Event GA21				5125222801 (LR)	+	2 x 48 rxns
GMOQuant RT IPC MIR162/MIR604				5125222201 (LR)	+	2 x 48 rxns

\*IPC: internal positive control

## Qualitative and Quantitative Assays – Detection of One Target



Target/GMO (OECD Identifier)	Qualitative Assay	IPC	Quantity	Quantitative Assay	IPC	Quantity
CaMV 35S promoter	see GMOScreen			5125224001 (LR)	+	2 x 48 rxns
nos terminator	see GMOScreen			5125224101 (LR)	+	2 x 48 rxns
3272 (SYN-E3272-5)	5421243501 (LR)	+	96 rxns	5125207601 (LR)	-	2 x 48 rxns
5307 (SYN-Ø5307-1)	5421230801 (LR)	+	96 rxns	5125222401 (LR)	-	2 x 48 rxns
Bt11 (SYN-BTØ11-1)	5421225401 (LR/HR)	+	96 rxns	5125206501 (LR)	-	2 x 48 rxns
Bt176 (SYN-EV176-9)	5421240301	+	96 rxns	5125209401 (LR)	-	2 x 48 rxns
DAS-40278-9 (DAS-4Ø278-9)	5421226001 (LR)	+	96 rxns	5125222701 (LR)	+	2 x 48 rxns
DAS-59122-7 (DAS-59122-7)	5421245001 (LR)	+	96 rxns	5125208201 (LR)	-	2 x 48 rxns
DP-004114-3 (DP-ØØ4114-3)	5421242201 (LR/HR)	+	96 rxns	5125223701 (LR/HR)	+	2 x 48 rxns
DP-098140-6 (DP-Ø9814Ø-6)	5421246501 (LR)	+	96 rxns			
GA21 (MON-ØØØ21-9)	5421245401 (LR)	+	96 rxns	5125204601 (LR)	-	2 x 48 rxns
Ly038 (REN-ØØØ38-3)	5421241201 (LR)	+	96 rxns			
MIR162 (SYN-IR162-4)	5421245601 (LR)	+	96 rxns	5125209701 (LR)	-	2 x 48 rxns
MIR604 (SYN-IR6Ø4-5)	5421245701 (LR)	+	96 rxns	5125206401 (LR)	-	2 x 48 rxns
MON810 (MON-ØØ81Ø-6)	5421241301 (LR)	+	96 rxns	5125207801 (LR)	-	2 x 48 rxns
MON863 (MON-ØØ863-5)	5421243401 (LR)	+	96 rxns	5125208001 (LR)	-	2 x 48 rxns
MON87403 (MON-87403-1)	5421244301 (LR)	+	96 rxns			
MON87411 (MON-87411-9)	5421244201 (LR)	+	96 rxns			
MON87427 (MON-87427-7)	5421244401 (LR)	+	96 rxns	5125222501 (LR)	-	2 x 48 rxns
MON87460 (MON-8746Ø-4)	5421243901 (LR)	+	96 rxns	5125222901 (LR)	-	2 x 48 rxns
MON88017 (MON-88Ø17-3)	5421244001 (LR)	+	96 rxns	5125207301 (LR)	-	2 x 48 rxns
MON89034 (MON-89Ø34-3)	5421243801 (LR)	+	96 rxns	5125206701 (LR)	-	2 x 48 rxns
MZHGOJG (SYN-ØØØJG-2)	5421245301 (LR)	+	96 rxns			
NK603 (MON-ØØ6Ø3-6)	5421243201 (LR)	+	96 rxns	5125204401 (LR)	-	2 x 48 rxns
T14 (ACS-ZMØØ2-1)	5421230401 (LR)	+	96 rxns			
T25 (ACS-ZMØØ3-2)	5421244901 (LR)	+	96 rxns			
TC1507 (DAS-Ø15Ø7-1)	5421243301 (LR)	+	96 rxns	5125209301 (LR)	-	2 x 48 rxns
VCO-01981-5 (VCO-Ø1981-5)	5421230201 (LR)	+	96 rxns			

\*IPC: internal positive control



## GMO Testing Kits for Soybean

### SMARTCheck GMO Soy

Use the following two qualitative multiplex assays for a broad coverage of GM soybean events:GMOScreen RT 35S/NOS/ABII & GMOScreen RT IPC Soy CsVMV/CV127/event DP305423-1

### Qualitative and Quantitative Assays – Detection of Multiple Targets

Qualitative and quantitative real-time PCR kits for GMO soy detecting multiple targets per tube. Please note that depending on the cyclers, either a low rox (LR) or no rox (NR) kit should be used.

Kit	Qualitative Assay	IPC	Quantity	Quantitative Assay	IPC	Quantity
GMOScreen RT IPC CsVMV/ event CV127/event DP-305423-1	5421227203 (LR) 5421227104 (NR)	+	96 rxns			
GMOIdent RT IPC DAS-44406-6 / DAS-81419-2 / DAS-68416-4	5421246001 (LR) 5421246002 (NR)	+	96 rxns			
GMOIdent RT IPC MON87708 / MON87701 / MON87705	5421244501 (LR) 5421244502 (NR)	+	96 rxns			
GMOScreen RT IPC CV127/ SAMS-ALS	5421225601 (LR)	+	96 rxns			
GMOQuant RT IPC 35S/ AgroBorder II				5125222301 (LR)	-	2 x 48 rxns
GMOQuant RT IPC 35S/ MON89788				5125210001 (LR)	-	2 x 48 rxns
GMOQuant RT IPC GTS 40-3-2 modification/Event MON89788				5125223901 (LR)	+	2 x 48 rxns

### Qualitative and Quantitative Assays – Detection of One Target

Target/GMO (OECD Identifier)	Qualitative Assay	IPC	Quantity	Quantitative Assay	IPC	Quantity
CaMV 35S Promoter	see GMOScreen			5125207201 (LR)	-	2 x 48 rxns
AgroBorder II element	see GMOScreen			5125222001 (LR)	-	2 x 48 rxns
CsVMV Modification	see GMOScreen			5125225101 (LR)	+	2 x 48 rxns
A2704-12 (ACS-GMØØ5-3)	5421226101 (LR)	+	96 rxns	5125206801 (LR)	-	2 x 48 rxns
A5547-127 (ACS-GMØØ6-4)	5421223701 (LR/HR+)	-	96 rxns	5125220601	-	2 x 48 rxns
CV127 (BPS-CV127-9)	5421240501 (LR)	+	96 rxns	5125220701	-	2 x 48 rxns
DAS-44406-6 (DAS-444Ø6-6)	5421245801 (LR)	+	96 rxns			
DAS-68416-4 (DAS-68416-4)	5421240101 (LR)	+	96 rxns			
DAS-81419-2 (DAS-81419-2)	5421245901 (LR)	+	96 rxns			
DP-305423-1 (DP-3Ø5423-1)	5421240601 (LR)	+	96 rxns	5125207501	-	2 x 48 rxns
DP-356043-5 (DP-356Ø43-5)	5421242301	+	96 rxns	5125220201	-	2 x 48 rxns
FG72 (MST-FGØ72-2)	5421240701 (LR)	+	96 rxns	5125224901 (LR)	+	2 x 48 rxns
MON87701 (MON-877Ø1-2)	5421241701 (LR)	+	96 rxns	5125220301	-	2 x 48 rxns
MON87705 (MON-877Ø5-6)	5421244701 (LR)	+	96 rxns	5125221601	-	2 x 48 rxns
MON87708 (MON-877Ø8-9)	5421240401 (LR)	+	96 rxns	5125223301 (LR)	+	2 x 48 rxns
MON87751 (MON-87751-7)	5421241801 (LR)	+	96 rxns	5125223501 (LR/HR)	+	2 x 48 rxns
MON87769 (MON-87769-7)	5421230701 (LR)	+	96 rxns	5125222601 (LR)	+	2 x 48 rxns
MON89788 (MON-89788-1)	5421241101 (LR)	+	96 rxns	5125224301 (LR)	+	2 x 48 rxns
GTS 40-3-2 (MON-Ø4Ø32-6)	5421242601 (LR/HR)	+	96 rxns	5125224201 (LR)	+	2 x 48 rxns
SYHTØH2 (SYN-ØØØH2-5)	5421246401 (LR)	+	96 rxns			

\*IPC: internal positive control





## GMO Testing Kits for Rapeseed/Canola

### SMARTCheck GMO Canola

Use the following two qualitative multiplex assays for a broad coverage of GM canola events:  
GMOScreen RT IPC EPSPS/NOS/pat(syn) & GMOScreen RT IPC ocs-terminator/Laurical™/oxy-235 Canola

### Qualitative and Quantitative Assays – Detection of Multiple Targets

Qualitative and quantitative real-time PCR kits for GMO rapeseed/canola detecting multiple targets per tube. Please note that depending on the cycler, either a low rox (LR) or no rox (NR) kit should be used.

Kit	Qualitative Assay	IPC	Quantity	Quantitative Assay	IPC	Quantity
GMOScreen RT IPC EPSPS/NOS/pat(syn)	5421228701 (LR) 5421228702 (NR)	+	96 rxns			
GMOScreen RT IPC ocs terminator/Laurical™/oxy-235	5421228201 (LR) 5421228301 (NR)	+	96 rxns			
GMOIdent RT IPC RT73/T45/MON88302	5421242701 (LR) 5421242702 (NR)	+	96 rxns			
GMOQuant RT IPC RT73/MON88302		+		5125224501 (LR)	+	2 x 48 rxns

### Qualitative and Quantitative Assays – Detection of One Target

Target/GMO (OECD Identifier)	Qualitative Assay	IPC	Quantity	Quantitative Assay	IPC	Quantity
DP-073496-4 (DP-073496-4)	5421243001 (LR)	+	96 rxns			
23-18-17, 23-198 (CGN-89465-2, CGN-89111-8)	5421242401	+	96 rxns			
MON88302 (MON-88302-9)	5421242901 (LR)	+	96 rxns	5125224401 (LR)	+	2 x 48 rxns
MS8 (ACS-BN005-8)	5421224201	-	96 rxns	5125209001	-	2 x 48 rxns
oxy-235 (ACS-BN011-5)	5421242501	+	96 rxns			
RF3 (ACS-BN003-6)	5421224301	-	96 rxns	5125209101	-	2 x 48 rxns
RT73 (MON-00073-7)	5421242801 (LR)	+	96 rxns	5125224601 (LR)	+	2 x 48 rxns
T45 (ACS-BN008-2)	5421223501 (LR)	+	96 rxns			

\*IPC: internal positive control



## GMO Testing Kits for Cotton

### Qualitative and Quantitative Assays – Detection of One Target



Please note that most of our qualitative kits and some quantitative kits include an Internal Positive Control (IPC).

Target/GMO (OECD Identifier)	Qualitative Assay	IPC	Quantity
281-24-236 (DAS-24236-5)	5421241501 (LR)	+	96 rxns
3006-210-23 (DAS-21023-5)	5421241601 (LR)	+	96 rxns
GHB614 (BCS-GH002-5)	5421241001 (LR)	+	96 rxns
LLcotton25 (ACS-GH001-3)	5421224101 (LR/HR+)	-	96 rxns
MON1445 (MON-01445-2)	5421222901	-	96 rxns
MON15985 (MON-15985-7)	5421224001 (LR/HR+)	-	96 rxns
MON88913 (MON-88913-8)	5421223401 (LR/HR+)	-	96 rxns

## GMO Testing Kits for Other Species

### Qualitative Assays – Detection of One Target



Please note that most of our qualitative kits and some quantitative kits include an Internal Positive Control (IPC).

Target/GMO (OECD Identifier)	Species	Qualitative Assay	IPC	Quantity
FP967 (CDC-FL001-2)	Flax/Linseed	5421246301 (LR)	+	96 rxns
Bt63 (TT51-1, HZU-HH001-9)	Rice	5421246201 (LR)	+	96 rxns
LLRice62 (ACS-OS002-5)	Rice	5421222001	-	96 rxns
LLRice601 (BCS-OS003-7)	Rice	5421222101	-	96 rxns
H7-1 (KM-000H71-4)	Sugar Beet	5421246101 (LR)	+	96 rxns
EO-1a	Salmon	5421230601	+	96 rxns

\*IPC: internal positive control







## GMO ELISA Testing Kits



### Qualitative ELISA Kits

Product name	Product Description	Nr of wells	Article No.
Cry1Ac/Ab ELISA Kit	Cotton/Corn/Soybean Individual Leaf, Seed	96	AID 007
Cry2A ELISA Kit	Cotton/Corn/Soybean Individual Leaf, Seed	96	AID 008
CP4EPSPS (RR) ELISA Kit	Cotton/Corn/Soybean/Canola Individual Leaf, Seed	96	AID 011
Cry1Ac/Cry2A Combined ELISA Kit	Cotton Individual Leaf, Seed	96	AID 017
PAT/bar ELISA Kit	Cotton/Corn/Canola/Soybean Individual Leaf, Seed	96	AID 018
Vip3A ELISA Kit	Cotton/Corn Individual Leaf, Seed	96	AID 023
PAT/pat ELISA Kit	Cotton/Corn/Canola/Soybean Individual Leaf, Seed	96	AID 027
Cry1F ELISA Kit	Cotton/Corn Individual Leaf, Seed	96	AID 004
Modified Cry3A ELISA Kit	Corn Individual Leaf, Seed	96	AID 052
Cry3Bb ELISA Kit	Corn Individual Leaf, Seed	96	AID 053
Chinese Fusion ELISA Kit	Cotton Individual Leaf, Seed	96	AID 006
Cry1F Quantitative ELISA Kit	Cotton/Corn Individual Leaf, Seed	96	AID 101F
PAT/bar Quantitative ELISA Kit	Mustard Individual Leaf, Seed	96	AID 102F
Cry1Ac/Ab Quantitative ELISA Kit	Cotton Individual Leaf, Seed	96	AID 103F
Cry2A Quantitative ELISA Kit	Cotton Individual Leaf, Seed	96	AID 105F
Cry1EC ELISA Kit	Cotton/Castor Individual Leaf, Seed	96	AID 020
Barnase ELISA Kit	Pollen from Canola/Mustard	96	AID 019
Barstar ELISA Kit	Pollen from Canola/Mustard	96	AID 016
Buffalo Milk Identification Elisa Kit	Quick 15-minute ELISA test which can detect up to 5% adulteration of buffalo milk in cow milk, goat or sheep milk. The test can be done on fresh or frozen raw milk only. (Sensitivity: 5% of buffalo milk)	96	AID 063
Cow Milk Identification Elisa Kit	Quick 15-minute ELISA test which can detect up to 5% adulteration of cow milk in buffalo milk, goat or sheep milk. The test can be done on fresh or frozen raw milk only. (Sensitivity: 5% of cow milk)	96	AID 064

## GMO Lateral Flow Devices



### Qualitative Bulk Grain Lateral Flow Kits

Product name	Product Description	Nr of strips	Article No.
CP4EPSPS (RR) LFS Kit	Soybean/Canola Bulk Seeds (0.1%)	100	AID 040
CP4EPSPS (RR) LFS Kit	Cotton/Corn Bulk Seeds (0.1%)	100	AID 043
Cry1Ac/Ab LFS Kit	Cotton/Corn Bulk Seeds (Sensitivity: 0.25% for Cotton & 0.8% for Corn)	100	AID 044
Cry2A LFS Kit	Cotton/Corn Bulk Seeds (Sensitivity: 0.25% for Cotton & 1% for Corn)	100	AID 046
Vip3A LFS Kit	Corn Bulk Seeds (0.25%)	100	AID 048
Cry1F LFS Kit	Corn Bulk Seeds (0.5%)	100	AID 050
Cry3Bb/eCry3.1Ab LFS Kit	Corn Bulk Seeds (0.5%)	100	AID 058
Cry3Bb LFS Kit	Corn Bulk Grain (0.2%)	100	AID 060

### Qualitative Individual Leaf/Seed Lateral Flow Kits



Product name	Product Description	Nr of strips	Article No.
Cry1Ac/Ab LFS Kit	Cotton/Corn Individual Leaf, Seed	100	AID 032
Cry1F LFS Kit	Cotton/Corn Individual Leaf, Seed	100	AID 033
Cry2A LFS Kit	Cotton/Corn Individual Leaf, Seed	100	AID 026
Vip3A LFS Kit	Cotton/Corn Individual Leaf, Seed	100	AID 031

Product name	Product Description	Nr of strips	Article No.
CP4EPSPS (RR) LFS Kit	Cotton/Corn/Soybean/Canola Individual Leaf, Seed	100	AID 025
PAT/Pat LFS Kit	Corn/Soybean Individual Leaf, Seed	100	AID 029
Cry1Ac/Cry2A LFS Kit	Cotton Individual Leaf, Seed	100	AID 038
Cry1Ab/CP4EPSPS (RR) LFS Kit	Corn Individual Leaf, Seed	100	AID 036
Cry1Ac/Cry2A/CP4EPSPS (RR) LFS Kit	Cotton Individual Leaf, Seed	100	AID 035
CP4 EPSPS/Vip3A LFS Kit	Cotton Individual Leaf, Seed	100	AID 037
PAT/bar LFS Kit	Canola Individual Leaf, Seed	100	AID 049
Modified Cry3A LFS Kit	Corn Individual Leaf, Seed	100	AID 057
Cry3Bb LFS Kit	Corn Individual Leaf, Seed	100	AID 054
Micro Pestles	Micro Pestles for Tissue Homogenizer for LFS Kit	100 Pestles	AID MP01

### Additional GMO ELISA Kits and Proteins

Product	Product Format	Quantity	Article No.
ABRAXIS® CP4 EPSPS*	ELISA Plate	96 tests	510101
Cry1Ab	Protein	10 µg	300003
Cry1Ac	Protein	10 µg	250020
Cry2A	Protein	10 µg	250040
Cry3B	Protein	10 µg	250050
Cry9C	Protein	10 µg	250060

\* Minimum order quantity: 5 kits

## Quantitative Bulk Grain Lateral Flow Kits

### GMO Lateral Flow Strips for RapidScan ST5-W Lateral Flow Reader

Product name	Product description	Article No.
CP4 EPSPS (RR) Quantitative LFS Kit – Soybean & Canola	LFS for CP4EPSPS Testing in Bulk Grain Soybean & Canola using RapidScan (Sensitivity: 0.05% for Soybean & 0.1% for Canola), 100 strips	EAID 101
CP4 EPSPS (RR) Quantitative LFS Kit – Corn	LFS for CP4EPSPS Testing in Bulk Grain Corn using RapidScan (Sensitivity: 0.1% for Corn), 100 strips	EAID 102
Vip3A Quantitative LFS Kit – Corn	LFS for Vip3A Testing in Bulk Grain Corn using RapidScan (Sensitivity: 0.2% for Corn), 100 strips	EAID 103
Cry3Bb Quantitative LFS Kit – Corn	LFS for Cry3Bb Testing in Bulk Grain Corn using RapidScan (Sensitivity: 0.5% for Corn), 100 strips	EAID 104

### RapidScan ST5-W Lateral Flow Assay Reader

Product name	Product description	Article No.
RapidScan ST5-W Lateral Flow Assay Reader	Portable instrument specifically designed for field and in-process testing applications requiring qualitative to semi-quantitative test results. Compatible with Gold Standard Diagnostics' GMO, allergen, glyphosate and algal toxins lateral flow tests.	LFRSCAN002
LFD Reader Adapter for GMO strips	Adapter for GMO LFDs, for use with RapidScan ST5-W LFD Reader	LFA0060001





# NUCLEIC ACID ISOLATION

Food, feed and seed laboratories are often faced with a number of challenges during the isolation of DNA. The high variability of samples types as well as inhibitory substance and low DNA yield can have detrimental impacts on the subsequent analytical methods, such as PCR testing. High-quality DNA is the prerequisite for the success of these methods, therefore it is crucial to select the right DNA method optimised for your sample type. Our kit portfolio offers DNA methods for a wide range of sample types.

## Automated DNA Isolation With iMAGo Food

Meeting the needs of a high-throughput laboratory, iMAGo Food offers an automated, magnetic-bead based technology to efficiently isolate genomic DNA from a high variety of

### Key Benefits

- Recovery up to 180 µg of DNA when using raw matrices such as corn kernels (DNA yield strongly depends on matrix type and grinding performance)
- For use on open platforms such as KingFisher Flex System and Allsheng Auto-Pure 96
- Highest matrix variability being validated with one workflow
- Fully validated workflow with subsequent GMO Real-Time PCR systems
- Based on solvent-free chemistry

### DNA Isolation Offering



Product name	Product description	Quantity	Article No.
iMAGo Food	Test kit for automated, magnetic-bead based isolation of high-quality DNA from food and feed samples. Designed for use on open automated platforms like KingFisher™ Flex System and Allsheng Auto-Pure 96.	96	5524421001
GENESpin	Silica-based spin-columns for the isolation of genomic DNA for food and feed samples. All items/reagents included.	50	5224400605
DNA Cleaning Columns	Spin-columns for additional DNA purification step. All items/reagents included.	100	5224700310

Note: if larger packaging formats are requested, please refer to your local sales support





# VETERINARY DRUG RESIDUES AND ADDITIVES

Veterinary drugs are usually administered within animal husbandry to cure and to prevent diseases, to increase weight gain and to tranquilize animals during transportation. These drugs consist of a complex group of hundreds of substances belonging to different chemical classes and therapeutic areas i.e., antibiotics, antiparasitics, nonsteroidal anti-inflammatory drugs, growth promoters such as steroid hormones and betaagonists, and many others.

The widespread use of veterinary drugs in livestock is of great concern as their presence in edible products could induce severe consequences on human health: i.e., hepato- and nefro-toxicity, side effects, allergic reactions, sterility, cancer, and last but not the least, drug contaminated food can favor anti-microbial resistance.

## ELISA Kits to Detect Veterinary Drug Residues and Feed Additives

We provide broad support for the needs of the meat, dairy, aquaculture, animal husbandry, veterinary, and other industries. Products include ELISA for quantitative analysis and lateral flow tests for rapid analysis of substances in matrices such as meat, egg, milk, honey, fish, crustaceans, molluscs, and animal feed.

Analytes include:

### Antimicrobials

- Sulfonamides \*
- Tetracyclines
- Quinolones \*
- Streptomycin
- Tylosin
- Chloramphenicol
- Nitrofurans metabolites (AOZ, AMOZ, SEM, AHD)

- Penicillin
- Ivermectin
- ABRAXIS® Salinomycin
- ABRAXIS® Monensin

### Beta-agonists

- Clenbuterol

### Steroids and RALs

- Zeranol
- Trenbolone

### Others

- Corticosteroids \*

(\*) Broad range kit: this kit can recognize a wide number of drugs belonging to the same substance

## Key Benefits of the VDR ELISA Kits

- *I'screen*: ELISA test kits for the detection of low levels of drug residues as well as the presence of a number of structure-related contaminants
- Rapid assays are available with 45 min incubation time (only the kits for detecting nitrofurans metabolites)



## I'screen Quantitative ELISA Test Kits



Product	Target	Product description	No. of tests / Quantity	Article No.
I'screen SULFA	Sulfonamides family	Sensitive broad-range assay for the quantitative analysis of all the principal sulfonamides used in zootechniques.	96	HU0050003
I'screen STREPTO	Streptomycin	Sensitive assay for the quantitative detection of streptomycin and dihydrostreptomycin	96	HU0050013
Milk Standard for I'screen Strepto		1.5ml of Milk Standard	1.5 ml	HU0050019
I'screen TYLOSIN	Tylosin	Sensitive assay for the quantitative analysis of tylosin A	96	HU0050020
I'screen CAP	Chloramphenicol	Sensitive assay for the quantitative detection of chloramphenicol in different matrices	96	HU0050001
I'screen CAP v2	Chloramphenicol	Sensitive assay for the quantitative detection of chloramphenicol in seafood and other matrices	96	HU0050002
I'screen QUINO	Fluoroquinolones	Sensitive broad-range assay for the quantitative research of all the regulated fluoroquinolones used in zootechniques.	96	HU0050004
I'screen TRENB		Sensitive assay for the quantitative detection of trenbolone	96	HU0050022
I'screen ZERANOL	Zeranol	Sensitive assay for the quantitative detection of zeranol	96	HU0050023
I'screen CORTICO	Corticosteroids	Broad-range assay for the research of corticosteroids	96	HU0050007
β-agonists (clenbuterol) ELISA kit	Clenbuterol	Sensitive assay for the quantitative detection of clenbuterol	96	HU0050018

## I'screen Rapid ELISA Test Kits



Product	Target	Product description	No. of tests / Quantity	Article No.
I'screen AOZ Rapid	AOZ	Test kit for the rapid quantitative detection of furazolidone metabolite in seafood, bovine and swine muscle, eggs and honey.	96	HU0050034
I'screen AMOZ Rapid	AMOZ	Test kit for the rapid quantitative detection of furaltadone metabolite in seafood, bovine and swine muscle, eggs and honey.	96	HU0050035
I'screen SEM Rapid	SEM	Test kit for the rapid quantitative detection of nitrofurazone metabolite in seafood, bovine and swine muscle and honey.	96	HU0050036
I'screen AHD Rapid	AHD	Test kit for the rapid quantitative detection of nitrofurantoin metabolite in seafood, bovine and swine muscle and honey.	96	HU0050037

## Other Kits to Detect Veterinary Drug Residues and Additives



Product	Product Format	Quantity	Article No.
SENSISpec Tetracycline	Plate	96 tests	HU0050014
SENSISpec Penicillin	Plate	96 tests	HU0050017
ABRAXIS® Enrofloxacin, ELISA, 96-test*	Plate	96 tests	522511
Ivermectin/Abamectin, ELISA, 96-test*	Plate	96 tests	5142B
ABRAXIS® Melamine, ELISA, 96-test	Plate	96 tests	50005B
ABRAXIS® Monensin, ELISA, 96-test*	Plate	96 tests	515785
ABRAXIS® Progesterone, Bovine Pregnancy (Milk/Serum/Plasma), ELISA, 96-test	Plate	96 tests	5081M
ABRAXIS® Salinomycin/Narasin, ELISA, 96-test	Plate	96 tests	515795
ABRAXIS® Sulfamethoxazole (SMX), ELISA, 96-test*	Plate	96 tests	522003
ABRAXIS® Melamine, Diluent	Reagent	250 mL	50005D
ABRAXIS® Melamine, Extraction Suspension	Reagent	500 mL	50005E
ABRAXIS® Ionophore Sample Diluent	Reagent	700 mL	301341
Salinomycin Conjugate Diluent	Reagent	800 mL	300767

\* Minimum order quantity: 5 kits

## BIOGENIC AMINE

Histamine is a biogenic amine, which is formed by enzymatical decarboxylation from the amino acid histidine. It can enter the human body via nutrition and can thus cause pseudo-allergic food intolerances.

Food intolerances, which are caused by increased histamine concentrations, are clinically characterized by rash, diarrhoea, vomiting, nausea, itching, headache and asthma. The extent of the reaction is dependent on the ingested amount of histamine.

Separated from histamine intolerances toxic reactions exist, which are caused by very high histamine concentrations. Toxic histamine concentrations, which can cause the so-called scombroid reaction, appear after bacterial degradation of protein-rich food, especially fish.

Histamine is found above all in cheese, fish, spinach, smoked products and red wine. Our kits provide a quick, economical and sensitive method to detect histamine in wine, fish or cheese.



## Histamine Kits

Product	Product Format	Quantity	Article No.
ABRAXIS® Histamine, ELISA, 96-test*	Plate	96 tests	515168
SENSISpec ELISA Histamine	Plate	96 tests	HU0030200
SENSISpec ELISA Histamine Rapid	Plate	96 tests	HU0030201

\* Minimum order quantity: 5 kits







# ANIMAL SPECIES

Animal species identification in food and feed products has grown in importance due to public health, economic and legal concerns. Even religious and ethical criteria can be at risk in the case of food adulteration. To verify the authenticity of products, food testing laboratories need reliable methods, which can answer these questions.

The application of specific methods can determine if lower-priced substitutes replace premium products such as chicken instead of turkey or cow milk instead of goat milk. Confidence that vegetarian or vegan food contains no trace of animal products is essential to brand integrity. We also offer DNA isolation and purification solutions for a wide range of matrices, including highly processed matrices such as pure gelatine"

## **DNAnimal Kits**

The DNAnimal product line offers a broad spectrum of sensitive real-time PCR kits for the most domestic animal species as well as specific applications like halal testing.

Most DNAnimal kits detect the species or taxonomic group in question with a sensitivity of 0.01%. Some specific kits (e.g. the DNAnimal Ident Pig HS) detecting mitochondrial targets are even more sensitive.

### **DNAnimal Screen**

- Kits cover different taxonomic groups
- Application for various food and feed relevant testing strategies, i.e. to test vegan or vegetarian food

### **DNAnimal Ident**

- For identifying or excluding individual animal species

## **Key Benefits**

- Multiplex kits targeting in total 12 animal species to increase efficiency in the laboratory
- Kits are validated on a number of different thermocyclers
- Contain an IPC (internal positive control) to exclude false-negative results
- Have undergone extensive specificity and sensitivity validation
- Produce robust and reliable results
- DNA extraction kits available for different matrices



## DNA<sup>Animal</sup> Kits – Detection of Multiple Targets



Kit	Product Description	IPC	Quantity	Cat No
DNA <sup>Animal</sup> Screen Halal IPC (LR)	Detection of pork and horse & donkey species DNA	+	96 rxns	5422221210
DNA <sup>Animal</sup> Mplex Horse&Donkey/ Cattle/Chicken	Detection of horse & donkey, cattle and chicken DNA	+	96 rxns	HU0070004
DNA <sup>Animal</sup> Mplex Goat/Pig/Bison	Detection of goat, pig and bison DNA	+	96 rxns	HU0070003
DNA <sup>Animal</sup> Mplex Water buffalo/ Turkey/Sheep	Detection of water buffalo, turkey and sheep DNA	+	96 rxns	HU0070002
DNA <sup>Animal</sup> Mplex Rabbit/ Muscovy Duck/Mallard Duck	Detection of rabbit, muscovy duck and mallard duck DNA	+	96 rxns	HU0070001

## DNA<sup>Animal</sup> Screen Kits – Detection of One Target

Kit	Product Description	IPC	Quantity	Cat No
DNA <sup>Animal</sup> Screen Mammal & Bird IPC	Detection of mammalian and avian DNA	+	96 rxns	5422212110
DNA <sup>Animal</sup> Screen Ruminant IPC	Detection of ruminant DNA	+	96 rxns	5422221110
DNA <sup>Animal</sup> Screen Fish IPC	Detection of fish DNA	+	96 rxns	5422211310
DNA <sup>Animal</sup> Screen Bird IPC	Detection of avian DNA	+	96 rxns	5422211410

## DNA<sup>Animal</sup> Ident Kits – Detection of One Target

Kit	Product Description	IPC	Quantity	Cat No
DNA <sup>Animal</sup> Ident Beef IPC	Detection of bovine DNA ( <i>Bos taurus</i> , bison and other bos species)	+	96 rxns	5422220610
DNA <sup>Animal</sup> Ident Pork IPC	Detection of porcine DNA (both, <i>Sus scrofa domestica</i> and <i>scrofa</i> )	+	96 rxns	5422211910
DNA <sup>Animal</sup> Ident Pig HS IPC (LR)	Detection of porcine DNA (both, <i>Sus scrofa domestica</i> and <i>scrofa</i> ) for low DNA samples (e.g. gelatin)	+	96 rxns	5422211810
DNA <sup>Animal</sup> Ident Chicken IPC (LR)	Detection of chicken ( <i>Gallus gallus</i> ) DNA	+	96 rxns	5422221010
DNA <sup>Animal</sup> Ident Duck IPC	Detection of duck ( <i>Anas platyrhynchos</i> and <i>Cairina moschata</i> ) DNA	+	96 rxns	5422220410
DNA <sup>Animal</sup> Ident Goose IPC	Detection of goose DNA	+	96 rxns	5422220810
DNA <sup>Animal</sup> Ident Turkey IPC	Detection of turkey DNA	+	96 rxns	5422211510
DNA <sup>Animal</sup> Ident Goat IPC	Detection of goat DNA	+	96 rxns	5422211610
DNA <sup>Animal</sup> Ident Sheep IPC	Detection of sheep DNA	+	96 rxns	5422211710
DNA <sup>Animal</sup> Ident Horse IPC (LR)	Detection of horse DNA	+	96 rxns	5422220110
DNA <sup>Animal</sup> Ident Water Buffalo IPC (LR)	Detection of water buffalo DNA	+	96 rxns	5422220910
DNA <sup>Animal</sup> Ident Donkey (LR)	Detection of donkey DNA	-	96 rxns	5422220210







# ENVIRONMENT AND WATER

Water is critical for life itself, making it arguably the most valuable resource on the planet. As a result, water is the object of numerous environmental laws and regulations throughout the world. These regulations address not only drinking water but the entire water cycle including surface and ground water, recreational, process and waste water.

Due to the diversity of water testing applications, flexibility is important and can provide distinct advantages to users in meeting specific testing objectives. Traditional analytical laboratory testing can often be costly and time consuming. Our commercially available test kits allow for accurate, on-site testing, providing near real time answers for critical decision-making, often at a lower cost than traditional methods.

## ABRAXIS® Environment and Water Kits

We provide innovative, near real time, field and lab based testing solutions for water and environmental samples.

### Algal Toxins

Our algal toxin products are available in multiple formats and applications to meet the diverse testing objectives of our customers. Test kits include quantitative ELISA plate kits as well as semi-quantitative/qualitative lateral flow kits. We hold the exclusive world-wide license for the ADDA-specific microcystins antibody, making us the sole commercial manufacturer of Microcystins ADDA test kits as specified in EPA Method 546. We also offer testing solutions for Cylindrospermopsin, Saxitoxins, Anatoxin-a, Brevetoxin, Anabaenopeptins, Okadaic acid, Domoic acid and BMAA in various sample matrices.

### Pesticides (including Glyphosate):

We offer the only commercially available AOAC approved Glyphosate ELISA kit for Durum Wheat, Whole Oats, Groats, Yellow Peas and Red Lentils. We also offer quantitative and qualitative detection of glyphosate using ELISA and lateral flow dipstick in other matrices including water, honey, coffee, grains, legumes and oats. Other pesticide kits include 2,4-D, Atrazine, DDE/DDT, Diuron, Fluridone, Imidacloprid, Metolachlor, Organophosphates/Carbamates, Pyrethroids and Trifluralin.

### Industrial Chemicals / Hydrocarbons

One of our core strengths is developing sensitive and specific antibodies against small molecules. We provide test kits for a variety of environmental contaminants.

### Markers for Bioactivity

Certain compounds found in consumer products can be used as markers of human bioactivity. We offer quantitative assays to measure these biomarkers in environmental samples.

### Equipment

We offer a variety of readers and associated equipment that are compatible with our rapid test kits including ELISA plate, tube and test strip readers. Our equipment offering supports both field and lab-based testing as well as applications ranging from qualitative to quantitative to meet your specific testing needs.

## Key Benefits

- 20+ years of collaboration with key government agencies to meet and exceed the needs of researchers and industry
- Unmatched expertise in rapid water and environmental testing
- Multiple technologies, formats and applications to meet customer-specific objectives



## Algal Toxins ELISA Plate & Tube Test Kits



Product	Product format	Quantity	Article No.
ABRAXIS® Anabaenopeptins	ELISA Plate	96 tests	520070
ABRAXIS® Anatoxin-a (VFDF)	ELISA Plate	96 tests	520060
ABRAXIS® BMAA	ELISA Plate	96 tests	520040
ABRAXIS® Brevetoxin (NSP)	ELISA Plate	96 tests	520034
ABRAXIS® Cylindrospermopsin	ELISA Plate	96 tests	522011
ABRAXIS® Domoic Acid (ASP) (Onsite Technologies)	ELISA Plate	96 tests	ON0021
ABRAXIS® Microcystins	ELISA Tube	40 tests	520012A
ABRAXIS® Microcystins/Nodularins (ADDA) (EPA ETV) (EPA Method 546)	ELISA Plate	96 tests	520011
ABRAXIS® Microcystins/Nodularins (ADDA) OH (EPA ETV) (includes LCRC)	ELISA Plate	96 tests	520011OH
ABRAXIS® Microcystins/Nodularins (ADDA) SAES	ELISA Plate	96 tests	520011SAES
ABRAXIS® Microcystins/Nodularins DM (EPA ETV) (CCL4)	ELISA Plate	96 tests	522015
Microcystins/Nodularins PP2A (EPA ETV)	ELISA Plate	96 tests	520032
ABRAXIS® Okadaic Acid (DSP)	ELISA Plate	96 tests	520021
Okadaic Acid (DSP), PP2A	ELISA Plate	96 tests	520025
ABRAXIS® Saxitoxins (PSP)	ELISA Plate	96 tests	52255B
ABRAXIS® Saxitoxins (PSP) Shipboard	ELISA Plate	96 tests	52255SB

## ABRAXIS® Algal Toxins Dipstick Test Kits



Product	Product format	Quantity	Article No.
Anatoxin-a (VFDF)	Dipstick	5 tests 20 tests	520042 520043
Cylindrospermopsin with QuikLyse™ Feature	Dipstick	5 tests 20 tests	520029 520030
Microcystins with QuikLyse™ Feature, Source Drinking Water	Dipstick	5 tests 20 tests	520019 520020
Microcystins with QuikLyse™ Feature, Recreational Water	Dipstick	5 tests 20 tests	520023 520022
Microcystins, Finished Drinking Water, 1 - 5 ppb	Dipstick	5 tests 20 tests	520016 520017
Microcystins, Finished Drinking Water, 0.3 - 3 ppb	Dipstick	20 tests	520046

## ABRAXIS® Algal Toxins Standards



Product	Product format	Quantity	Article No.
Homo-anatoxin-a	Standard	4 µg/mL, 0.5 ml	301295
Anatoxin-a (+), Certified	Standard	~5 µg/ml, 0.5 ml	300586
Anatoxin-a (+)	Standard	10 µg/ml, 0.5 ml	300620
Dihydroanatoxin-a	Standard	10 µg/ml, 0.5 ml	300655
13 C4-(+)-Anatoxin-a	Standard	10 µg/ml, 0.5 ml	300505
BMAA D3	Standard	1.0 mg	300622
Cylindrospermopsin	Standard	0.5 mg	300624
Cylindrospermopsin, Certified	Standard	~10 µg/ml, 0.5 ml	300588
Cylindrospermopsin	Standard	10 µg/ml, 1 ml	300626
7-epi-Cylindrospermopsin, supplied dry	Standard	5 µg	300651
7-deoxy-Cylindrospermopsin, supplied dry	Standard	5 µg	300653
[15N5] Cylindrospermopsin	Standard	10 µg/ml, 0.5 ml	300504
[15N5] 7-deoxy-Cylindrospermopsin, dry	Standard	5 µg	300508
[15N5] 7-epi-Cylindrospermopsin, dry	Standard	5 µg	300506
Desmethyl Microcystin LR	Standard	10 µg/ml, 1ml	300656
Microcystin HiR	Standard	10 µg/ml, 1ml	300654

Product	Product format	Quantity	Article No.
Microcystin LA	Standard	10 µg/ml, 1ml	300628
Microcystin LF, Deuterated	Standard	10 µg/ml, 0.5ml	300500
Microcystin LF	Standard	10 µg/ml, 1ml	300646
Microcystin LR	Standard	0.5 mg	300630
Microcystin LR	Standard	10 µg/ml, 1ml	300632
Microcystin LR Deuterated (D7)	Standard	10 µg/ml, 0.5ml	300502
Microcystin LR Ethylated (D5, 99%)	Standard	25 µg	300507
Microcystin LR, Certified	Standard	10 µg/ml, 0.5 ml	300639
Microcystin LW	Standard	10 µg/ml, 1 ml	300650
Microcystin LY Certified	Standard	5 µg/ml, 0.5 ml	300589
Microcystin LY	Standard	10 ug/mL, 1 mL	300634
Microcystin RR	Standard	10 µg/ml, 1 ml	300636
Microcystin RR, Certified	Standard	10 µg/ml, 0.5 ml	300582
Microcystin WR	Standard	10 µg/ml, 1 ml	300652
Microcystin YR	Standard	10 µg/ml, 1 ml	300638
Nodularins	Standard	10 µg/ml, 1 ml	300640
Nodularins, Certified	Standard	10 µg/ml, 0.5 ml	300591
Saxitoxins	Standard	10 µg/ml, 1 ml	300642
Saxitoxins, Certified	Standard	20 µg/ml, 0.5 ml	300590
[15N7] Saxitoxin	Standard	5 µg	300956
Saxitoxins (PSP) (EC 2002/225 Compliant) Seawater Standards Set	Standard	Set	52255SW

## ABRAXIS® Algal Toxins QC Materials

Product	Product format	Quantity	Article No.
Microcystins/Nodularins (ADDA) Accessory Pack for Method 546 (for QC)	Accessory Pack	1 pack	520013
Microcystins LR Check Samples (0, 2 and 20 ppb)	Check Samples	1 set	422011
Microcystins/Nodularins (ADDA) Spiking Solution, MCT-LR	Spiking Solution	50µg/L, 10 ml	300702
Cylindrospermopsin MDL Study Solution	MDL Study Solution	1 ml x 3 vials	300705
Cylindrospermopsin MDL Study Solution (for CAAS/CAAS Cube)	MDL Study Solution	10 ml x 1 vial	300705C
Microcystins MDL Study Solution	MDL Study Solution	1 ml x 3 vials	300700
Microcystins MDL Study Solution (for CAAS/CAAS Cube)	MDL Study Solution	10 ml x 1 vial	300700C
Saxitoxins (PSP) MDL Study Solution	MDL Study Solution	1 ml x 3 vials	300710
Saxitoxins (PSP) MDL Study Solution (for CAAS/CAAS Cube)	MDL Study Solution	10 ml x 1 vial	300710C
ABRAXIS® Uri-Standards Set	ACE Microcystins		520101
ABRAXIS® Seri-Standards Set	ACE Microcystins		520102

## ABRAXIS® Algal Toxins Related Products

Product	Product format	Quantity	Article No.
QuikLyse™, Rapid Lysing and Filtration Kit	Accessory Pack	45 tests	529911
Anatoxin-a/Saxitoxins, Sample Diluent (10X solution)	Reagent	25 ml 1 L	530010 53001L
ABRAXIS® Benthic Mat Sample Extraction Solution	Reagent	250 mL	301337
Brevetoxin (NSP) Sample Diluent	Reagent	30 ml	520027
Brevetoxin (NSP) Seawater Sample Pretreatment Solution	Reagent	25 ml	520028
Cylindrospermopsin, Seawater Sample Treatment Solution	Reagent	45 tests	529914
Cylindrospermopsin, Sample Diluent	Reagent	500 mL	301306
Microcystins/Nodularins (ADDA) (EPA ETV) Seawater Clean Up Kit	Reagent	45 tests	529912
Microcystins/Nodularins DM Seawater Sample Treatment Solution	Reagent	45 tests	529913
ABRAXIS® Affinity Capture Extraction (ACE) Kit - Microcystins	Reagent	20 tests	520100
ABRAXIS® Saxitoxins (PSP) Shipboard	Accessory pack	20 tests	530009
ABRAXIS® Microcystins Sample Diluent	Reagent	25 mL	300110



## ABRAXIS® Industrial Chemicals / Hydrocarbons

Product	Product format	Quantity	Article No.
ABRAXIS® Dioxins/Furans (TCDD)*	ELISA plate	96 tests	530037
ABRAXIS® Coplanar PCBs*	ELISA plate	96 tests	530011
ABRAXIS® PCBs Higher Chlorinated*	ELISA plate	96 tests	530041
ABRAXIS® Phthalates*	ELISA plate	96 tests	530050
ABRAXIS® Triclosan*	ELISA plate	96 tests	530114

\*Minimum order quantity: 5 kits

## ABRAXIS® Markers for Bioactivity

Product	Product format	Quantity	Article No.
Caffeine	ELISA plate	96 tests	515575
Carbamazepine*	ELISA plate	96 tests	515585

\*Minimum order quantity: 5 kits

## ABRAXIS® Acrylamide

Product	Product format	Quantity	Article No.
ABRAXIS® Acrylamide Derivatization Kit*	ELISA plate	96 tests	515676
ABRAXIS® Acrylamide-ES & Derivatization*	ELISA plate	96 tests	515690
Acrylamide-ES Sample Preparation	Bags/vessels caps/plungers/ filters	50 tests	515695

\*Minimum order quantity: 5 kits

## ELISA Plate, Tube & Test Strip Readers & Equipment

Product	Product format	Article No.
AbraScan® Dipstick Reader III, Handheld reader	Reader	475025B
RapidScan ST5-W Lateral Flow Reader	Reader	475035 (US orders)
RapidScan ST5-W Reader Adapter for ABRAXIS® Test Strips	Adapter	475032 (US orders)
RapidScan ST5-W Reader Adapter for Allergens	Adapter	475033 (US orders)
RapidScan ST5-W Reader Adapter for GMO	Adapter	475037 (US orders)
Microplate Reader, Model 4303 (full plates, full & partial well strips)	Reader	475010
Microplate Reader, Model 4700 with Printer (up to 3 full & partial well strips)	Reader	475007
Photometer M6+ Reader (combo single microwell/tube)	Reader	475101

## ABRAXIS® Pesticides

Product	Product format	Quantity	Article No.
2,4-D*	ELISA plate	96 tests	54003A
2,4-D*	Tube	40 tests	54004B
Atrazine	Magnetic Particle	100 tests	500001
Atrazine	ELISA Plate	96 tests	520005
Atrazine Standard Bundle; Atrazine Particle Standards 1-3	Standards		500003
DDE/DDT*	ELISA Plate	96 tests	540041
ABRAXIS® Dicamba	ELISA Plate	96 tests	500050
Diuron*	ELISA Plate	96 tests	520001
Fluridone*	Magnetic Particle	100 tests	500511
Imidacloprid/Clothianidin	ELISA Plate	96 tests	500800
Imidacloprid/Clothianidin	Sample Diluent	1 L	500803
Metolachlor*	Magnetic Particle	100 tests	500061
Metolachlor*	ELISA Plate	96 tests	500065
Organophosphate/Carbamate (OP/C)*	Tube	20 tests	550051
Organophosphate/Carbamate (OP/C)	Plate	96 tests	550055
Pyrethroids*	ELISA Plate	96 tests	500204
Spinosyn*	ELISA tube	40 tests	50020B
Spinosyn 100X Surfactant		10 mL	301135
Trifluralin	ELISA Plate	96 tests	500601

\* Minimum order quantity: 5 kits

## ABRAXIS® Pesticides Related Products

Product	Product format	Quantity	Article No.
ABRAXIS® Imidacloprid/Clothianidin	Sample Diluent	1 L	500803
ABRAXIS® Atrazine Standard Bundle	Atrazine Particle Standards 1-3	Control L	500003

## ABRAXIS® Glyphosate

Product	Product format	Quantity	Article No.
Glyphosate	Magnetic Particle	120 tests	500081
Glyphosate	ELISA plate & derivatization kit	96 tests	500205
Glyphosate, Derivatization Kit	Magnetic Particle ELISA	96 tests	500084
Glyphosate, Derivatization Kit	Microtiter Plate ELISA	96 tests	500087
Glyphosate ELISA AOAC Test Kit for Durum Wheat, Whole Oats, Groats, Yellow Peas & Red Lentils	ELISA Plate	96 tests	500089
Glyphosate*	Dipstick	5 tests	500098
Glyphosate	Dipstick	20 tests	500095

\*Minimum order quantity: 4 kits

## ABRAXIS® Glyphosate Related Products

Product	Product format	Quantity	Article No.
ABRAXIS® Glyphosate	Clean-up Reagent	2.5 g	500094
ABRAXIS® Glyphosate	Sample Diluent	100 mL	500082
ABRAXIS® Glyphosate	Sample Diluent	1 L	500083
Glyphosate Dipstick Control Solution Mid Detection Range	Reagent		500102

# LIFE SCIENCES / R&D

## AbraMag® Magnetic Purification Kits

Product	Product format	Quantity	Article No.
Genomic DNA Magnetic Purification Kit	Magnetic Beads Kit	100 tests	555020

## Magnetic Separator Racks

Product	Compatibility	Article No.
Plate Magnetic Separator	2 x 96-well plate (bottom pull)	472236
Tube Magnetic Separator	60 x 11-13 mm tubes	472231
Tube Magnetic Separator	6 x 50 ml tubes	472291
Tube Magnetic Separator	5 x 15 ml tubes and 3 x 50 ml tubes	472250
Tube/Microcentrifuge Tube Magnetic Separator	1 x 1.5 ml or 1 x 15 ml and 1 x 50 ml	472280
Microcentrifuge Tube Magnetic Separator	6 x 1.5 ml microcentrifuge tubes	472260
Microcentrifuge Tube Magnetic Separator	32 x 1.5 ml microcentrifuge tubes	472287
Flask Magnetic Separator	Tissue culture flasks	472240

## AbraMag® Magnetic Beads

Product	Product format	Quantity	Article No.
Amine	Magnetic Beads	50 mg	544080
Carboxyl	Magnetic Beads	50 mg	544085
Carboxyl	Magnetic Beads	125 mg	544086
Biotin	Magnetic Beads	10 mg	544000
Biotin	Magnetic Beads	25 mg	544001
Biotin	Magnetic Beads	5 mg	544002
Streptavidin	Magnetic Beads	10 mg	544050
Streptavidin	Magnetic Beads	25 mg	544051
Streptavidin	Magnetic Beads	5 mg	544052
anti-Rabbit IgG	Magnetic Beads	5 mg	544012
anti-Mouse IgG	Magnetic Beads	20 mg	544020
anti-Mouse IgG	Magnetic Beads	5 mg	544022
anti-Human IgG	Magnetic Beads	20 mg	544060
anti-Human IgG	Magnetic Beads	100 mg	544061
anti-Human IgG	Magnetic Beads	5 mg	544062
Protein A	Magnetic Beads	10 mg	544030
Protein A	Magnetic Beads	25 mg	544031
Protein A	Magnetic Beads	5 mg	544032
Protein G	Magnetic Beads	25 mg	544041
Protein G	Magnetic Beads	5 mg	544042
DNA Purification	Magnetic Beads	12 mg	544090
PCR Clean-Up and Size Select	Magnetic Beads	5 ml	544100
PCR Clean-Up and Size Select	Magnetic Beads	50 ml	544103







# VETERINARY DIAGNOSTICS

## Our Mission

With 40 years of experience, **Gold Standard Diagnostics is a leading company in Veterinary Diagnostics field**, from livestock to wild and companion animals.

Our **goal** is to **improve animal health**, by offering the best solutions for official control programs, private laboratories and academic or corporate partners worldwide.

## What is new?

### PETS

- We keep **expanding** our diagnostic solutions for **pets**, with a novel automated workflow for **canine allergy** diagnostic testing, based on **ELISA-Microarrays**.
- INgezim Leishmania 2.0, an improved ELISA for canine leishmaniosis based on a recombinant antigen for best specificity and sensitivity.

### SWINE

- The **African Swine Fever Virus immunoassays**, based on a second generation of proprietary recombinant antigens and antibodies for the best product fit.
- External validation studies of **INgezim PRRS Blue**, our new ELISA for PRRSV antibody detection, in Germany, Poland, US and China, with **best performance and unrivalled dynamic range** for different diagnostic scenarios.

### RUMINANTS

- **INgezim BVDV Erns**, a new generation of BVDV sandwich ELISA for Erns antigen detection for best sensitivity detecting infected animals.

### AUTOMATION

- Our teams are committed to deploy hands-off serology testing, with high-quality lab instruments, validated protocols and supporting services.

We develop, manufacture and globally supply the broadest range of diagnostic kits for veterinary diseases including **immunoassays and molecular diagnostics** plus high-quality **automation** solutions.



#### ELISA

- INgezim
- VetLINE
- Serazym



#### Microarray

- INgezim PLEX



#### Lateral Flow Assays

- INgezim CROM (IC)



#### Real-Time PCR

- INgene



#### LineBlot

- Vetblot



#### Automation

- Equipment and Support Services



# VET ALLERGY DIAGNOSTIC SOLUTION

Have full control of dog, cat and horse allergy diagnostic tests in your own laboratory.

The Canine INgezim PLEX Environmental and Food Sensitization kits allow to detect sensitizations to the most common environmental and food allergens affecting dogs. Together with the GSD allergy ELISA tests, they form the most complete solution for diagnosing veterinary allergies.

**ALL IN ONE:** Complete solution (kits + automation) to carry out the diagnosis in your own laboratory, without having to send samples or depend on third-party companies.

**ACCURACY:** In microarrays assays, sensitivity is increased due to the miniaturization of the assay. Similarly, double testing of each allergen and the use of CCD\* blockers provide greater diagnostic precision.

**EXPERIENCE:** We combine the best expertise of two GSD companies performing research on allergy diagnostics for more than 10 years, to offer you complete diagnostics solutions including consumables, automation and technical support

**COST & TIME REDUCTION:** Multiplexing reduces labor and effective work time, which further reduces the already affordable price per test. In addition, it requires a low sample consumption (100 µL of serum), facilitating handling with samples from companion animals.

**CUSTOMIZATION:** Microarray test panels can be customized based on the geographic area or specific design needs of each laboratory.

\*CCD = Cross-reactive Carbohydrate Determinants, present in glycoproteins of some Plant and insect allergens. While CCDs are found in many allergens, they do not trigger clinical symptoms.

Species	Product	Method	Analyte(Ag/Ab)	Matrix	Format/No. tests	Article No.
Canine	Canine INgezim PLEX Environmental Sensitization kit	Microarray	Ab, (30 allergens)	serum	1pl/96 samples	R.15.CEA.K.61
	Canine INgezim Plex CCD* Blocker Solution	Microarray	Ab, (22 allergens)	serum	1pl/96 samples	R.15.CFA.K.61
	Canine INgezim Plex CCD* Blocker Solution	Microarray, reagent			1 bottle/96 samples	R.15.BLO.K.61
	Canine Food Allergy 16 Screen IgE Canine Food Allergy 16 Screen IgG	ELISA indirect ELISA indirect	Ab, IgE, (16 allergens) Ab, IgG, (16 allergens)	serum serum	1pl/5 samples 1pl/5 samples	ILE-SCH20 ILE-SCH21
Feline	Feline Food Allergy 16 Screen IgE Feline Food Allergy 16 Screen IgG	ELISA indirect ELISA indirect	Ab, IgE, (16 allergens) Ab, IgG, (16 allergens)	serum serum	1pl/5 samples 1pl/5 samples	ILE-SCK20 ILE-SCK21
	Equine	Horse Feed 8 Screen IgE Horse Feed 8 Screen IgG	ELISA indirect ELISA indirect	Ab, IgE, (8 allergens) Ab, IgG, (8 allergens)	serum serum	1pl/5 samples 1pl/5 samples
Horse Insects 7 Screen IgE Horse Perennial 16 Screen IgE		ELISA indirect ELISA indirect	Ab, IgE, (7 allergens) Ab, IgE, (16 allergens)	serum serum	1pl/5 samples 1pl/5 samples	ILE-SCP23 ILE-SCP21
Horse Seasonal 16 Screen IgE		ELISA indirect	Ab, IgE, (16 allergens)	serum	1pl/5 samples	ILE-SCP22

## Automation with Hailstorm

- Automatic analyzer and reader for ELISA, ELISA-microarray and CLIA assays
- Programmable for a wide range of protocols, two microplates sites available for assays
- Processes, analyzes and provides results in the form of reports and in different file formats



Product	Method	Article No.
Hailstorm	Microarray, equipment	R.00600

# IMMUNOASSAYS

Easy and reliable tests for the widest range of pathogens, host species and diagnostic applications.



ELISA

## INgezim

- Based on unique proprietary reagents
- Including notifiable diseases and zoonosis
- Broad regulatory coverage
- Various assay designs & formats
- Snap-off microtiter strip\*

## VetLINE

- Standardized workflows, easy to automate
- Ready-to-use and colour-coded reagents
- With cut off control
- Snap-off microtiter strip

## Serazym

- Standardized workflows
- Easy to automate
- Specifically optimized for stool testing

\*Exception: INgezim ADV gE Plus



Lateral Flow



LineBlots

## INgezim CROM (IC)

- Easy and fast (10-15 min)
- Suitable for on-site testing
- High sensitivity and specificity

## VetBlot

- Multiparameter immunoblots
- Antigens coated on membranes allow to detect specific antibodies in patient samples
- Comprehensive antibody profiles on one test strip
- Manual or automated workflows
- For confirmation after ELISA or LFA

## MULTISPECIES



Disease/Pathogen	Product	Method	Analyte (Ag/Ab)	Species	Matrix	Format/No. tests	Article No.
Amoebiasis	Serazym Entamoeba histolytica	ELISA, sandwich	Ag	All species	faeces	1pl/96	HW/E-018-A
Brucellosis	INgezim Brucella Compac 2.0	ELISA, blocking	Ab	Ruminant, porcine	serum	2pl/192	R.10.BRU.K.3/2
	VetLine Brucella	ELISA, indirect	Ab	Ruminant, porcine	serum, pooled serum, milk	5pl/480 1pl/96	R.10.BRU.K.3/5 R.10.BRUVT0050
Clostridium tetani toxin	VetLine Clostridium tetani toxin 5S	ELISA, indirect	Ab	All species	serum, plasma	1pl/96	R.10.TETVT5043
Cryptosporidiosis	Serazym Cryptosporidium parvum	ELISA, sandwich	Ag	All species	faeces	1pl/96	HW/E-039-A
	INgezim CryptoCROM	LFA	Ag	All species	faeces	dev/12 dev/30	R.10.CRY.K.4/12 R.10.CRY.K.4/30
Giardiasis	Serazym Giardia	ELISA, sandwich	Ag	All species	faeces	1pl/96	HW/E-106-A
	VetLine Giardia Antigen	ELISA, sandwich	Ag	All species	faeces	1pl/96	R.10.GIAVT4160
	INgezim Giardia CROM	LFA	Ag	All species	faeces	dev/12 dev/30	R.10.GIA.K.4/12 R.10.GIA.K.4/30
Hantavirus	VetLine Hantavirus	ELISA, indirect	Ab	Rodents	serum, plasma	1pl/96	R.10.HANVT0670
	VetBlot Hantavirus Lineblot	Lineblot	Ab	All species	serum, plasma	dev/16	HANVT2670
Hepatitis E	VetLine Hepatitis E Virus (HEV)	ELISA, indirect	Ab	All species	serum, plasma	1pl/96	R.10.HEVVT0780
Influenza A	INgezim Influenza A	ELISA, blocking	Ab	Avian, porcine, equine	serum	2pl/192	R.10.FLU.K.3/2
						5pl/480	R.10.FLU.K.3/5
Lyme disease - Borrelia burgdorferi	VetLine Borrelia IgM	ELISA, indirect	Ab, IgM	All species	serum, plasma	1pl/96	R.10.BORVM0040
Norovirus	Serazym Norovirus	ELISA, sandwich	Ag	All species	faeces	1pl/96	HW/E-061
Rotavirus	Serazym Rotavirus	ELISA, sandwich	Ag	All species	faeces	1pl/96	HW/E-020
	INgezim Rotavirus DAS	ELISA, sandwich	Ag	All species	faeces	2pl/192	R.10.RT.K.2
	INgezim Rotavirus CROM	LFA	Ag	All species	faeces	dev/12 dev/30	R.10.RT.K.4/12 R.10.RT.K.4/30
SARS-CoV-2	INgezim COVID 19 S Vet	ELISA, indirect	Ab, S protein	Canine, feline, mink, ferrets	serum, plasma	2pl/192	R.10.CoS.K.1/2
						5pl/480	R.10.CoS.K.1/5
Tick-borne encephalitis (TBEV/FSME)	VetLine TBE/FSME	ELISA, indirect	Ab	All species	serum, plasma	1pl/96	R.10.TICVT0440
	VetLine TBE/FSME IgM	ELISA, indirect	Ab	All species	serum, plasma	1pl/96	R.10.TICVM0440
Toxoplasmosis	VetLine Toxoplasma	ELISA, indirect	Ab	Canine, Feline	serum	1pl/96	R.10.TOXVT0460
	VetLine Toxoplasma IgM	ELISA, indirect	Ab	Feline	serum	1pl/96	R.10.TOXVM0460
Tuberculosis	INgezim Tuberculosis DR	ELISA, DR	Ab	wild & domestic animals (incl. porcine, small ruminants), NOT cattle	serum, plasma, blood (on paper), milk (small ruminants) (NOT cattle)	2pl/192	R.10.TB*.K.0/2
						5pl/480	R.10.TB*.K.0/5
West Nile Fever	INgezim West Nile Compac	ELISA, blocking	Ab	Avian, equine	serum	2pl/192	R.10.WNV.K.3/2
						5pl/480	R.10.WNV.K.3/5
Yersiniosis	VetLine Yersinia	ELISA, indirect	Ab	All species	serum, plasma	1pl/96	R.10.YERV0990

## PORCINE



Disease/Pathogen	Product	Method	Analyte (Ag/Ab)	Matrix	Format/No. tests	Article No.
African Swine Fever (ASFV)	INgezim PPA Compac	ELISA, blocking	Ab	serum	2pl/192 5pl/480	R.11.PPA.K.3/2 R.11.PPA.K.3/5
	INgezim ASFV-R	ELISA, indirect	Ab, cp312 & p30	serum, blood (fresh/paper), spleen exudates	2pl/192 5pl/480	R.11.ASF.K.1/2 R.11.ASF.K.1/5
	INgezim PPA DAS 2.0	ELISA, sandwich	Ag	blood, cell culture, spleen	2pl/192 5pl/480	R.11.PPA.K.2/2 R.11.PPA.K.2/5
	INgezim ASF CROM Ab 2.0	LFA	Ab	blood, serum, plasma	dev/30	R.11.ASF.K.41/30
	INgezim ASF CROM Ag 2.0	LFA	Ag	blood	dev/100	R.11.ASF.K41/100
	INgezim ASF CROM Ag/Ab	LFA	Ag + Ab	blood, serum	dev/30 dev/100	R.11.AS2.K.42/30 R.11.AS2.K42/100 R.11.ASF.K.43/30 R.11.ASF.K43/100
Aujeszky's Disease (ADV or PRV)	INgezim ADV gB	ELISA, blocking	Ab, gB	serum	2pl/192 5pl/480	R.11.GB.K.3/2 R.11.GB.K.3/5
	INgezim ADV gE Plus	ELISA, blocking	Ab, gE	serum	2pl/192 5pl/480	R.11.GEP.K.3/2 R.11.GEP.K.3/5
	INgezim ADV Total	ELISA, indirect	Ab	serum	2pl/192 5pl/480	R.11.ADV.K.1/2 R.11.ADV.K.1/5
Brucellosis	INgezim Brucella Compac 2.0	ELISA, blocking	Ab	serum	2pl/192 5pl/480	R.10.BRU.K.3/2 R.10.BRU.K.3/5
	INgezim Brucella Porcina	ELISA, indirect	Ab	serum	2pl/192 5pl/480	R.11.BP.K.1/2 R.11.BP.K.1/5
	VetLine Brucella	ELISA, indirect	Ab	serum, milk	1pl/96	R.10.BRUVT0050
Classical Swine Fever (CSFV)	INgezim CSF Compac	ELISA, blocking	Ab	serum	2pl/192	R.11.CSF.K.3/2
					5pl/480	R.11.CSF.K.3/5
Enzootic pneumonia	INgezim M. Hyo Compac	ELISA, blocking	Ab	serum	2pl/192	R.11.MHY.K.3/2
					5pl/480	R.11.MHY.K.3/5
Erysipelas (Mal Rojo)	INgezim Swine Erysipela	ELISA, indirect	Ab	serum	2pl/192	R.11.MR.K.1/2
					5pl/480	R.11.MR.K.1/5
Glässer's disease	INgezim Haemophilus parasuis	ELISA, indirect	Ab	serum	2+2pl/192	R.11.HPS.K.1/2
Influenza	INgezim Influenza Porcina 2.0	ELISA, indirect	Ab	serum	2pl/192	R.11.FLU.K.1/2
					5pl/480	R.11.FLU.K.1/5
					2pl/192 5pl/480	R.10.FLU.K.3/2 R.10.FLU.K.3/5
Pasteurellosis	Vetline Pasteurella Multocida Toxin Antibody	ELISA, indirect	Ab	serum	1pl/96	R.11.PASVT0960
Porcine circovirus (PCV2)	INgezim Circo IgG	ELISA, indirect	Ab, IgG	serum	2pl/192	R.11.PCV.K.1/2
					5pl/480	R.11.PCV.K.1/5
					2+2pl/192	R.11.PCV.K.2
Porcine Coronavirus (PRCV, PEDV, TGEV)	INgezim PCV DAS	ELISA, sandwich	Ag	virus culture samples	1pl/96	R.11.CIR.K.2
					2pl/192	R.11.CIR.K.2/2
	INgezim Corona Diferencial 2.0	ELISA, blocking	Ab, TGEV & PRCV	serum	2pl/192	R.11.DIF.K.3/2
					5pl/480	R.11.DIF.K.3/5
INgezim Coronavirus Porcino 2.0	ELISA, blocking	Ab, TGEV/PRCV	serum	2pl/192	R.11.PRC.K.3/2	
				5pl/480	R.11.PRC.K.3/5	
INgezim TGEV 2.0	ELISA, blocking	Ab	serum	2pl/192	R.11.TGE.K.3/2	
				5pl/480	R.11.TGE.K.3/5	
INgezim PEDV	ELISA, indirect	Ab	serum	2pl/192 5pl/480	R.11.PED.K.1/2 R.11.PED.K.1/5	



Disease/Pathogen	Product	Method	Analyte (Ag/Ab)	Matrix	Format/No. tests	Article No.
Porcine parvovirus (PPV)	INgezim PPV Compac	ELISA, competitive	Ab	serum	2pl/192 5pl/480	R.11.PPV.K.3/2 R.11.PPV.K.3/5
	INgezim PPV	ELISA, indirect	Ab	serum	2pl/192 5pl/480	R.11.PPV.K.1/2 R.11.PPV.K.1/5
	INgezim PPV DAS	ELISA, sandwich	Ag	biological samples including virus cultures	1pl/96	R.11.PPV.K.2
	Swinecheck APP MIX	ELISA, indirect	Ab, except 10, 12, 13, 14	serum	6pl/576	R.11.APP.K.1/3
Porcine pleuropneumonia	Swinecheck APP MIX 10-12	ELISA, indirect	Ab, 10 & 12	serum	2pl/192	R.11.APX.K.1/2
	INgezim PRRS 2.0	ELISA, indirect	Ab, EU & US	serum	2pl/192 5pl/480	R.11.PR2.K.1/2 R.11.PR2.K.1/5
Porcine reproductive and respiratory syndrome (PRRSV)	INgezim PRRS Blue	ELISA, indirect	Ab, EU & US	serum, plasma	2pl/192 5pl/480	R.11.PR3.K.1/2 R.11.PR3.K.1/5
Rotavirus (type A)	INgezim Rotavirus Porcino	ELISA, indirect	Ab	serum	2pl/192	R.11.RTP.K.1/2
Trichinosis	VetLine Trichinella	ELISA, indirect	Ab	serum	1pl/96	R.11.TRIVT0480
Tuberculosis	INgezim Tuberculosis DR	ELISA, DR	Ab	serum, plasma, blood (on paper), milk (small ruminants) (NOT cattle)	2pl/192 5pl/480	R.10.TB*.K.0/2 R.10.TB*.K.0/5
	INgezim TB Porcine	ELISA, indirect	Ab	serum, plasma, blood on filter paper	2pl/192 5pl/480	R.11.TBP.K.1/2 R.11.TBP.K.1/5
	INgezim TB CROM Ab	LFA	Ab	blood, serum	dev/30 dev/100	R.11.TBP.K.41/30 R.11.TBP.K41/100

## RUMINANTS



Disease/Pathogen	Product	Method	Analyte (Ag/Ab)	Matrix	Format/No. tests	Article No.
Bluetongue (BTV)	INgezim BTV Compac 2.0	ELISA, blocking	Ab	serum, plasma	2pl/192 5pl/480	R.12.BTV.K.3/2 R.12.BTV.K.3/5
	INgezim BTV DAS	ELISA, sandwich	Ag	cell culture	1pl/96	R.12.BTV.K.2
	INgezim BTV DR	ELISA, DR	Ab	serum	2pl/192 5pl/480	R.12.BTV.K.0/2 R.12.BTV.K.0/5
	INgezim BTV CROM Anticuerpo	LFA	Ab	serum	dev/30	R.12.BTV.K.41/30
Bovine Besnoitiosis	INgezim Besnoitia	ELISA, indirect	Ab	serum	2pl/192 5pl/480	R.12.BES.K.1/2 R.12.BES.K.1/5
	VetLine Bovine Haptoglobin	ELISA, indirect	Ab	serum, plasma	1pl/96	R.12.BHAPV4040
Bovine leukosis (BLV)	INgezim BLV Compac 2.0	ELISA, blocking	Ab	serum, milk	2pl/192 5pl/480	R.12.BLV.K.3/2 R.12.BLV.K.3/5
	INgezim BLV Confirmation	ELISA, indirect	Ab	serum	10pl/960 5pl/480	R.12.BLV.K.3/10 R.12.BLV.K.1/5
Bovine Pneumonia (BRV)	INgezim BRV Compac	ELISA, competitive	Ab	serum	2pl/192 5pl/480	R.12.BRS.K.3/2 R.12.BRS.K.3/5

Disease/Pathogen	Product	Method	Analyte (Ag/Ab)	Matrix	Format/No. tests	Article No.
Brucellosis	INgezim AGID	AGID	Ab	serum	6pl/504	R.12.BB2.K.7/84
	INgezim Brucella Compac 2.0	ELISA, blocking	Ab	serum	2pl/192 5pl/480	R.10.BRU.K.3/2 R.10.BRU.K.3/5
	INgezim Brucella Bovina 2.0	ELISA, indirect	Ab	serum	2pl/192 5pl/480 10pl/960	R.12.BB2.K.1/2 R.12.BB2.K.1/5 R.12.BB2.K.1/10
	INgezim Brucella Bovina Milk	ELISA, indirect	Ab	milk	6pl/576	R.12.BB.K.1/6
	INgezim Brucella ovis	ELISA, indirect	Ab	serum	2pl/192 5pl/480	R.13.BO.K.1/2 R.13.BO.K.1/5
	INgezim Brucella Small Ruminants	ELISA, indirect	Ab	serum	2pl/192 5pl/480	R.13.BM.K.1/2 R.13.BM.K.1/5
Coxiella burnetii (Q-fever)	VetLine Brucella	ELISA, indirect	Ab	serum, pooled serum, milk	1pl/96	R.10.BRUVT0050
	VetLine Coxiella	ELISA, indirect	Ab	serum, plasma, (milk)	1pl/96	R.12.COXVT0600
	VetLine Coxiella Phase 1	ELISA, indirect	Ab	serum, plasma, (milk)	1pl/96	R.12.COX1VT0600
Infectious Bovine Rhinotracheitis (BoHV-1)	VetLine Coxiella Phase2	ELISA, indirect	Ab	serum, plasma, (milk)	1pl/96	R.12.COX2VT0600
	INgezim IBR Compac 2.0	ELISA, blocking	Ab, gB	serum, plasma, milk	2pl/192 5pl/480	R.12.BHV.K.3/2 R.12.BHV.K.3/5
	INgezim IBR gE	ELISA, blocking	Ab, gE	serum, plasma, milk, whey	2pl/192 5pl/480	R.12.IBE.K.3/2 R.12.IBE.K.3/5
Maedi-Visna - Caprine Arthritis Encephalitis	INgezim IBR 2.0	ELISA, indirect	Ab	serum, plasma, milk	2pl/192 5pl/480	R.12.BHV.K.1/2 R.12.BHV.K.1/5
	INgezim Maedi Confirmation	ELISA, indirect	Ab	serum	4pl/192	R.13.SLC.K.1
Neosporosis	INgezim Maedi Screening	ELISA, indirect	Ab	serum	2pl/192 5pl/480	R.13.SLS.K.1/2 R.13.SLS.K.1/5
	INgezim Neospora 3.0	ELISA, indirect	Ab	serum, plasma	2pl/192 5pl/480	R.12.NC.K.1/2 R.12.NC.K.1/5
Paratuberculosis	INgezim Paratuberculosis	ELISA, indirect	Ab	serum, milk	2pl/192 5pl/480	R.12.PTB.K.1/2 R.12.PTB.K.1/5
	INgezim PPR Compac	ELISA, blocking	Ab	serum	2pl/192 5pl/480 10pl/960	R.13.PPR.K.3/2 R.13.PPR.K.3/5 R.13.PPR.K.3/10
Pestivirus (BVDV and BDV)	INgezim Pestivirus Compac	ELISA, competitive	Ab, p80	serum, plasma, milk, whey	2pl/192 5pl/480	R.12.BVD.K.3/2 R.12.BVD.K.3/5
	INgezim BVD DAS	ELISA, sandwich	Ag, p80	blood, serum, plasma, leukocytes, ear tissue, cell culture	1pl/96 5pl/480	R.12.BVD.K.2 R.12.BVD.K.2/5
	INgezim BVD Erns	ELISA, sandwich	Ag, Erns	blood, serum, plasma, ear tissue	5pl/480	R.12.BV2.K.2/5
Rift Valley Fever (RVFV)	INgezim FVR Compac	ELISA, blocking	Ab	serum, plasma	2pl/192 5pl/480	R.13.FVR.K.3/2 R.13.FVR.K.3/5
	INgezim FVR IgM	ELISA, capture	Ab, IgM	serum	2pl/192 5pl/480	R.13.FVR.K.2/2 R.13.FVR.K.2/5
Rotavirus (type A)	INgezim Rota Bovino	ELISA, indirect	Ab	serum	5pl/480 2pl/192	R.13.FVR.K.2/5 R.12.RT.K.1/2
Tuberculosis	INgezim Tuberculosis DR	ELISA, DR	Ab	serum, plasma, blood (on paper), milk (small ruminants) (NOT cattle)	2pl/192 5pl/480	R.10.TB*.K.0/2 R.10.TB*.K.0/5





# CANINE



Disease/Pathogen	Product	Method	Analyte (Ag/Ab)	Matrix	Format/No. tests	Article No.
Anaplasmosis	VetLine Anaplasma	ELISA, indirect	Ab	serum, plasma	1pl/96	R.15.ANAV0850
Babesiosis	VetLine Babesia	ELISA, indirect	Ab	serum, plasma	1pl/96	R.15.BABVT0890
Brucellosis	INgezim Brucella IC	LFA	Ab	blood, serum, plasma	dev/12	R.15.BC.K.41/12
Canine coronavirus (CCV)	INgezim Corona Canino	ELISA, indirect	Ab	serum	1pl/96	R.15.CCV.K.1
Canine C-Reactive Protein (cCRP)	VetLine Canine C-Reactive Protein (cCRP)	ELISA, sandwich	Ab	serum, plasma	1pl/96	R.15.CCRPVT4050
Canine distemper virus (CDV) (Moquillo)	INgezim Moquillo IgG	ELISA, indirect	Ab, IgG	serum	1pl/96	R.15.CDG.K.1
	VetLine Canine Distemper Virus (CDV)	ELISA, indirect	Ab	serum, plasma	1pl/96	R.15.MEAVT0330
	INgezim Moquillo IgM	ELISA, capture	Ab, IgM	serum	1pl/96	R.15.CDM.K.2
Canine Parvovirus (CPV)	INgezim CDV-IC	LFA	Ag	tears, conjunctiva samples, nasal discharges	dev/30	R.15.CDV.K.42/30
	INgezim Parvo Canino (CPV)	ELISA, indirect	Ab	serum	1pl/96	R.15.CPV.K.1
	VetLine Canine Parvovirus (CPV)	ELISA, indirect	Ab	serum, plasma	1pl/96	R.15.PARVT0370
	INgezim CPV DAS	ELISA, sandwich	Ag	faeces	1pl/96	R.15.CPV.K.2
Canine Parvovirus, Coronavirus & Giardia	INgezim CPV IgM (CPV)	ELISA, capture	Ab, IgM	serum	1pl/96	R.15.CPM.K.2
	INgezim CPV IC	LFA	Ag	faeces	dev/12 dev/50	R.15.CP2.K.42/12 R.15.CP2.K.42/50
	INgezim CPV/CCV IC	LFA	Ag	faeces	dev/12	R.15.CCD.K.42/12
	INgezim CPV/GIA/CCV IC	LFA	Ag	faeces	dev/12	R.15.PGC.K.42/12
Dirofilaria immitis/heartworm	INgezim CPV/Giardia IC	LFA	Ag	faeces	dev/12	R.15.CGD.K.42/12
	VetLine Dirofilaria Antigen	ELISA, sandwich	Ag	serum, plasma	1pl/96	R.15.DIRVT4760
	INgezim Heart-CROM	LFA	Ag	blood, serum, plasma	dev/12 dev/30	R.15.HW.K.4/12 R.15.HW.K.4/30
Echinococcosis	VetLine Echinococcus	ELISA, indirect	Ab	serum, plasma	1pl/96	R.15.ECHVT0130
Ehrlichiosis	INgezim Ehrlichia	ELISA, indirect	Ab	serum, plasma	1pl/96 10pl/960	R.15.EHR.K.1 R.15.EHR.K.1/10
	INgezim Ehrlichia VET	ELISA, indirect	Ab	serum, plasma	1pl/32	R.15.EHR.K.8/32
	VetLine Ehrlichia	ELISA, indirect	Ab	serum, plasma	1pl/96	R.15.EHRVT0930
	INgezim EHRLICROM	LFA	Ab	blood, serum, plasma	dev/12 dev/30	R.15.EHR.K.4/12 R.15.EHR.K.4/30
Leishmaniasis	INgezim Leishmania	ELISA, indirect	Ab	serum, plasma	1pl/96 10pl/960	R.15.LSH.K.1 R.15.LSH.K.1/10
	INgezim Leishmania 2.0	ELISA, indirect	Ab	serum, plasma	1pl/96 10pl/960	R.15.LS2.K.1 R.15.LS2.K.1/10
	INgezim Leishmania VET	ELISA, indirect	Ab	serum, plasma	1pl/32	R.15.LSH.K.8/32
	VetLine Leishmania	ELISA, indirect	Ab	serum, plasma	1pl/96	R.15.LEIVT0310
	INgezim LEISHMACROM	LFA	Ab	blood, serum	dev/10 dev/30	R.15.LSH.K.41/10 R.15.LSH.K.41/30
Leptospirosis	VetBlot Leishmania Lineblot	Lineblot	Ab	serum, plasma	dev/96	LEIVT2310
	VetLine Leptospira	ELISA, indirect	Ab	serum, plasma	1pl/96	R.15.LEPVT0660
	VetLine Leptospira IgM	ELISA, indirect	Ab	serum, plasma	1pl/96	R.15.LEPVM0660
Lyme disease - Borrelia burgdorferi	INgezim Leptospira IgM IC	LFA	Ab, IgM	blood, serum, plasma	dev/12	R.15.LEPTO.K.41/12
	VetLine Borrelia IgG	ELISA, indirect	Ab, IgG	serum, plasma	1pl/96	R.15.BORVT0040
	INgezim Lyme-CROM	LFA	Ab	blood, serum, plasma	dev/12	R.15.LY.K.4/12
	Borrelia IgG Lineblot (dog)	Lineblot	Ab	serum, plasma	dev/32	DE226G32
Rabies	INgezim E.I.A. Rabia	ELISA, sandwich	Ag	vaccines	1 bottle/96	DE400.61
SARS-CoV-2	INgezim COVID 19 S Vet	ELISA, indirect	Ab, S protein	serum, plasma	2pl/192 5pl/480	R.10.CoS.K.1/2 R.10.CoS.K.1/5
Scabies	VetLine Sarcoptes	ELISA, indirect	Ab	serum	1pl/93	R.15.SARVT0980
Toxocariasis	VetLine Toxocara	ELISA, indirect	Ab	serum, plasma	1pl/96	R.15.TOCVT0450
Toxoplasmosis	VetLine Toxoplasma	ELISA, indirect	Ab	serum	1pl/96	R.10.TOXVT0460

# FELINE



Disease/Pathogen	Product	Method	Analyte (Ag/Ab)	Matrix	Format/No. tests	Article No.
Bartonellosis	VetLine Bartonella	ELISA, indirect	Ab	serum, plasma	1pl/96	R.16.BARVT0900
Canine Parvovirus, Coronavirus & Giardia	INgezim CPV/Giardia IC	LFA	Ag	faeces	dev/12	R.15.CGD.K.42/12
Feline Coronavirus (FCV)	INgezim Corona Felino (FCoV)	ELISA, indirect	Ab	serum	1pl/96	R.16.FCV.K.1
	VetLine Feline Corona Virus (FCoV/FIP)	ELISA, indirect	Ab	serum, plasma	1pl/96	R.16.FIPVT0870
Feline Immunodeficiency (FIV)	INgezim FCoV IC	LFA	Ab	blood, serum	dev/12	R.16.FCV.K.41/12
	VetLine Feline Immunodeficiency Virus (FIV)	ELISA, indirect	Ab	serum, plasma	1pl/96	R.16.FIVVT0750
Feline Leukaemia (FeLV)	INgezim FIV IC	LFA	Ab	blood, serum	dev/12 dev/30	R.16.FI2.K.41/12 R.16.FI2.K.41/30
	INgezim FeLV	ELISA, indirect	Ab, gp70	serum	1pl/96	R.16.FLV.K.1
	INgezim FeLV Vet	ELISA, indirect	Ag, p27	serum, plasma	1pl/32	R.16.FLV.K.9/32
	INgezim FeLV DAS	ELISA, sandwich	Ag, p27	serum, plasma	1pl/96	R.16.FLV.K.2
Feline Leukaemia (FeLV) & Immunodeficiency (FIV)	VetLine Feline Leukemia Virus (FeLV) Antigen	ELISA, sandwich	Ag	serum, plasma	1pl/96	R.16.FELVT4800
	INgezim FeLV IC	LFA	Ag, p27	blood, serum, plasma	dev/12 dev/30	R.16.FL2.K.42/12 R.16.FL2.K.42/30
Feline panleukopenia	INgezim FPV IC	LFA	Ag	faeces, intestinal fluid	dev/12	R.16.FPV.K.42/12
SARS-CoV-2	INgezim COVID 19 S Vet	ELISA, indirect	Ab, S protein	serum, plasma	2pl/192 5pl/480	R.10.CoS.K.1/2 R.10.CoS.K.1/5
Toxoplasmosis	VetLine Toxoplasma	ELISA, indirect	Ab	serum	1pl/96	R.10.TOXVT0460
	VetLine Toxoplasma IgM	ELISA, indirect	Ab	serum	1pl/96	R.10.TOXVM0460
	INgezim Feline toxoplasma IC	LFA	Ab, IgG & IgM	blood, serum, plasma	dev/12	R.16.TOX.K.41/12

# RABBIT



Disease/Pathogen	Product	Method	Analyte (Ag/Ab)	Matrix	Format/No. tests	Article No.
Myxomatosis	INgezim Myxomatosis	ELISA, indirect	Ab	serum	2pl/192	R.17.MIX.K.1/2
	INgezim RHDV	ELISA, indirect	Ab	serum	2pl/192	R.17.RHD.K.1/2
Rabbit Hemorrhagic Disease (RHDV)	INgezim RHDV DAS	ELISA, sandwich	Ag	liver, other biological samples	1pl/96	R.17.RHD.K.2
	INgezim RHDV 1/2 DIF CROM	LFA	Ag	liver homogenates and exudates	dev/12 dev/30	R.17.RHD.K42/12 R.17.RHD.K42/30

# AVIAN



Disease/Pathogen	Product	Method	Analyte (Ag/Ab)	Matrix	Format/No. tests	Article No.
Influenza A	INgezim Influenza A	ELISA, blocking	Ab	serum	2pl/192	R.10.FLU.K.3/2
					5pl/480	R.10.FLU.K.3/5
Riemerella anatipestifer	VetLine Riemerella	ELISA, indirect	Ab	serum, plasma	1pl/96	R.18.RIEMVT0880
West Nile Fever	INgezim West Nile Compac	ELISA, blocking	Ab	serum	2pl/192	R.10.WNV.K.3/2
					5pl/480	R.10.WNV.K.3/5

# EQUINE



Disease/Pathogen	Product	Method	Analyte (Ag/Ab)	Matrix	Format/No. tests	Article No.
African horse sickness (AHSV)	INgezim AHSV Compac Plus	ELISA, blocking	Ab	serum	2pl/192	R.14.AHS.K.3/2
	INgezim PEA DAS	ELISA, sandwich	Ag	spleen, tissues	5pl/480	R.14.AHS.K.3/5
	INgezim AHSV CROM Anticuerpo	LFA	Ab	serum	dev/30	R.14.AHS.K.41/30
Equine arteritis (EAV)	INgezim Arteritis 2.0	ELISA, indirect	Ab	serum	2+2pl/192	R.14.EA2.K.1
Equine infectious anemia (EIAV)	INgezim Anemia Equina	ELISA, DR	Ab	serum	2pl/192	R.14.AIE.K.0/2
	INgezim AIE-CROM	LFA	Ab	serum	dev/30	R.14.AIE.K.41/30
Equine rhinopneumonitis - Herpesvirus	INgezim Rinoneumonitis	ELISA, indirect	Ab	serum	2pl/192	R.14.HVE.K.1/2
	VetLine Equine Herpesvirus 1 (EHV-1)	ELISA, indirect	Ab	serum, plasma	5pl/480	R.14.HVE.K.1/5
Influenza A	INgezim Influenza A	ELISA, blocking	Ab	serum	2pl/192	R.10.FLU.K.3/2
					5pl/480	R.10.FLU.K.3/5
Lyme disease - Borrelia burgdorferi	Borrelia IgG Lineblot (horse) set	Lineblot	Ab	serum, plasma	dev/32	DE226K62
	IgG Konjugat/Conjugate (anti-Pferd/Horse) LINE	Lineblot, reagent			1 bottle/96	DE400.62
West Nile Fever	INgezim West Nile Compac	ELISA, blocking	Ab	serum	2pl/192	R.10.WNV.K.3/2
	INgezim West Nile IgM	ELISA, capture	Ab, IgM	serum	5pl/480	R.10.WNV.K.3/5
					1+1pl/96	R.14.WNV.K.2

# MOLECULAR ASSAYS, REAL-TIME PCR

The veterinary molecular portfolio includes over 200 real-time PCR assays, offering quick, flexible and user-friendly solutions, both for livestock and companion animals.

We cover one of the broadest range of veterinary diseases caused by bacteria, viruses and parasites.



## INGene Real-Time PCR

### Common features\*

- Real time PCR assays
- Convenient format, ready to use assay mix
- Optimized sensitivity
- Co-amplification of internal control
- Homogeneous thermal profile, allowing panel testing
- Tested with reference strains, field isolates and clinical samples
- 100 rxn format

\*Some specific kits are provided in 2-tubes mix. Other exceptions are indicated.





# Real-time PCR Assays (100 reactions)

## PCR Kits for CATTLE



Product	Article No.
INgene q Anaplasma marginale	R.12.AMA.K.5/100
INgene q Anaplasma phagocytophilum	R.10.APH.K.5/100
INgene q Anaplasma spp.	R.10.ANS.K.5/100
INgene q Babesia bigemina	R.12.BBI.K.5/100
INgene q Babesia bovis	R.12.BBO.K.5/100
INgene q Bacteroides fragilis enterotoxina	R.10.BFT.K.5/100
INgene q Besnoitia besnoiti	R.12.BES.K.5/100
INgene q Bibersteinia trehalosi	R.10.BIB.K.5/100
INgene q BoHV-1	R.12.BH1.K.5/100
INgene q BoHV-2	R.12.BH2.K.5/100
INgene q BoHV-4	R.12.BH4.K.5/100
INgene q Bovine Coronavirus	R.12.BCo.K.5/100
INgene q Bovine Parainfluenza 3	R.12.PI3.K.5/100
INgene q Bovine Torovirus	R.10.BoT.K.5/100
INgene q BRSV	R.12.BRS.K.5/100
INgene BRUCE-LADDER V *	R.10.BRU.K.5/50
INgene q Brucella spp.	R.10.BSP.K.5/100
INgene q Brucella Typing MULTIPLEX	R.10.BRM.K.5TC/Q
INgene q Brucella Typing ROX MULTIPLEX	R.10.BRM.K.5TX/Q
INgene q BVDV - BDV	R.10.BOD.K.5/100
INgene q C. fetus and T. foetus MULTIPLEX	R.12.XFE.K.5/100
INgene q Campylobacter coli	R.10.CAM.K.5/100
INgene q Campylobacter fetus	R.10.CFE.K.5/100
INgene q Campylobacter jejuni	R.10.CJE.K.5/100
INgene q Campylobacter spp.	R.10.CPY.K.5/100
INgene q Chlamydia abortus	R.10.CAB.K.5/100
INgene q Chlamydiaceae	R.10.CHL.K.5/100
INgene q Clostridioides difficile Toxin A	R.10.CDA.K.5/100
INgene q Clostridioides difficile Toxin B	R.10.CDB.K.5/100
INgene q Clostridium botulinum	R.10.CBO.K.5/100
INgene q Clostridium chauvoei	R.10.CHA.K.5/100
INgene q Clostridium haemolyticum	R.10.CLH.K.5/100
INgene q Clostridium novyi	R.10.CNO.K.5/100
INgene q Clostridium septicum	R.10.CSE.K.5/100
INgene q Corynebacterium pseudotuberculosis	R.10.COR.K.5/100
INgene q Coxiella burnetii	R.10.COX.K.5/100
INgene q Cryptosporidium parvum	R.10.CPA.K.5/100
INgene q Cryptosporidium spp.	R.10.CRY.K.5/100
INgene q Dichelobacter nodosus	R.10.DIN.K.5/100
INgene q Eimeria spp.	R.10.EIM.K.5/100
INgene q Fusobacterium necrophorus	R.10.FUS.K.5/100
INgene q Giardia intestinalis	R.10.GIN.K.5/100
INgene q Histophilus somni	R.10.HSO.K.5/100
INgene q Influenza D virus	R.10.IFD.K.5/100
INgene q Leukotoxin Mannheimia haemolytica	R.10.LKT.K.5/100
INgene q Listeria monocytogenes	R.10.LMO.K.5/100

Product	Article No.
INgene q M. bovis and S. aureus MULTIPLEX	R.10.XMA.K.5/100
INgene q Mannheimia haemolytica	R.10.MAN.K.5/100
INgene q Moraxella bovis	R.12.MRX.K.5/100
INgene q Mycobacterium bovis & M.caprae	R.10.MYB.K.5/100
INgene q Mycobacterium tuberculosis complex	R.10.MTB.K.5/100
INgene q Mycoplasma bovis	R.12.MBO.K.5/100
INgene q Mycoplasma wenyonii	R.12.MYW.K.5/100
INgene q Nebovirus	R.12.NEB.K.5/100
INgene q Neospora caninum	R.10.NEO.K.5/100
INgene q Norovirus Genotype 3	R.12.NVG.K.5/100
INgene q Paeniclostridium sordelli	R.10.CSO.K.5/100
INgene q Paratuberculosis	R.10.PTB.K.5/100
INgene q Paratuberculosis MULTIPLEX	R.10.XPT.K.5/100
INgene q Pasteurella multocida	R.10.PAS.K.5/100
INgene q Pathogenic Leptospira	R.10.LEP.K.5/100
INgene q Piroplasma	R.10.PIR.K.5/100
INgene q Prototheca spp.	R.10.PRT.K.5/100
INgene q Pseudomonas aeruginosa	R.10.PSE.K.5/100
INgene q Rhodococcus equi	R.10.REQ.K.5/100
INgene q Rotavirus A	R.10.RTA.K.5/100
INgene q Salmonella enterica	R.10.SEN.K.5/100
INgene q Salmonella infantis	R.10.STI.K.5/100
INgene q Staphylococcus aureus	R.10.SAU.K.5/100
INgene q Staphylococcus epidermidis	R.10.SEP.K.5/100
INgene q Staphylococcus haemolyticus	R.10.SHA.K.5/100
INgene q Streptococcus agalactiae	R.10.SAG.K.5/100
INgene q Streptococcus dysgalactiae	R.10.SDY.K.5/100
INgene q Streptococcus uberis	R.10.SUB.K.5/100
INgene q Theileria annulata	R.12.THA.K.5/100
INgene q Toxoplasma gondii	R.10.TOX.K.5/100
INgene q Tritrichomonas foetus	R.12.TRI.K.5/100
INgene q Ureaplasma diversum	R.12.URE.K.5/100

\*Conventional end-point PCR, 50 reactions format only

## PCR Kits for SMALL RUMINANTS



Product	Article No.
INgene q Anaplasma ovis	R.13.AOV.K.5/100
INgene q Anaplasma phagocytophilum	R.10.APH.K.5/100
INgene q Anaplasma spp.	R.10.ANS.K.5/100
INgene q Bacteroides fragilis enterotoxina	R.10.BFT.K.5/100
INgene q Bibersteinia trehalosi	R.10.BIB.K.5/100
INgene q Bovine Torovirus	R.10.BoT.K.5/100
INgene BRUCE-LADDER V *	R.10.BRU.K.5/50
INgene q Brucella ovis	R.13.BOV.K.5/100
INgene q Brucella spp.	R.10.BSP.K.5/100

Product	Article No.
INgene q Brucella Typing MULTIPLEX	R.10.BRM.K.5TC/Q
INgene q Brucella Typing ROX MULTIPLEX	R.10.BRM.K.5TX/Q
INgene q BVDV - BDV	R.10.BOD.K.5/100
INgene q Campylobacter coli	R.10.CAM.K.5/100
INgene q Campylobacter fetus	R.10.CFE.K.5/100
INgene q Campylobacter jejuni	R.10.CJE.K.5/100
INgene q Campylobacter spp.	R.10.CPY.K.5/100
INgene q Chlamydia abortus	R.10.CAB.K.5/100
INgene q Chlamydiaceae	R.10.CHL.K.5/100
INgene q Clostridioides difficile Toxin A	R.10.CDA.K.5/100
INgene q Clostridioides difficile Toxin B	R.10.CDB.K.5/100
INgene q Clostridium botulinum	R.10.CBO.K.5/100
INgene q Clostridium chauvoei	R.10.CHA.K.5/100
INgene q Clostridium haemolyticum	R.10.CLH.K.5/100
INgene q Clostridium novyi	R.10.CNO.K.5/100
INgene q Clostridium septicum	R.10.CSE.K.5/100
INgene q Contagious Ecthyma	R.13.ORF.K.5/100
INgene q Corynebacterium pseudotuberculosis	R.10.COR.K.5/100
INgene q Coxiella burnetii	R.10.COX.K.5/100
INgene q Cryptosporidium parvum	R.10.CPA.K.5/100
INgene q Cryptosporidium spp.	R.10.CRY.K.5/100
INgene q Dichelobacter nodosus	R.10.DIN.K.5/100
INgene q Eimeria spp.	R.10.EIM.K.5/100
INgene q Erysipelothrix rhusiopathiae	R.10.ERU.K.5/100
INgene q Fusobacterium necrophorus	R.10.FUS.K.5/100
INgene q Giardia intestinalis	R.10.GIN.K.5/100
INgene q Histophilus somni	R.10.HSO.K.5/100
INgene q Leukotoxin Mannheimia haemolytica	R.10.LKT.K.5/100
INgene q Listeria monocytogenes	R.10.LMO.K.5/100
INgene q M. bovis and S. aureus MULTIPLEX	R.10.XMA.K.5/100
INgene q Maedi Visna - CAEV	R.13.SRL.K.5/100
INgene q Mannheimia haemolytica	R.10.MAN.K.5/100
INgene q Mycobacterium avium complex	R.10.MAV.K.5/100
INgene q Mycobacterium bovis & M. Caprae	R.10.MYB.K.5/100
INgene q Mycobacterium tuberculosis complex	R.10.MTB.K.5/100
INgene q Mycoplasma agalactiae	R.13.MYA.K.5/100
INgene q Mycoplasma mycoides	R.13.MMC.K.5/100
INgene q Mycoplasma ovipneumoniae	R.13.MOV.K.5/100
INgene q Mycoplasma ovis	R.13.MYO.K.5/100
INgene q Mycoplasma putrefaciens	R.13.MPU.K.5/100
INgene q Neospora caninum	R.10.NEO.K.5/100
INgene q Paeniclostridium sordelli	R.10.CSO.K.5/100
INgene q Paratuberculosis	R.10.PTB.K.5/100
INgene q Paratuberculosis (multiplex)	R.10.XPT.K.5/100
INgene q Pasteurella multocida	R.10.PAS.K.5/100
INgene q Pathogenic Leptospira	R.10.LEP.K.5/100
INgene q Piroplasma	R.10.PIR.K.5/100
INgene q Prototheca spp.	R.10.PRT.K.5/100
INgene q Pseudomonas aeruginosa	R.10.PSE.K.5/100
INgene q Rotavirus A	R.10.RTA.K.5/100
INgene q Salmonella abortus ovis	R.13.SAB.K.5/100
INgene q Salmonella enterica	R.10.SEN.K.5/100

Product	Article No.
INgene q Salmonella infantis	R.10.STI.K.5/100
INgene q Staphylococcus aureus	R.10.SAU.K.5/100
INgene q Staphylococcus epidermidis	R.10.SEP.K.5/100
INgene q Staphylococcus haemolyticus	R.10.SHA.K.5/100
INgene q Streptococcus agalactiae	R.10.SAG.K.5/100
INgene q Streptococcus dysgalactiae	R.10.SDY.K.5/100
INgene q Streptococcus equi	R.10.SEQ.K.5/100
INgene q Streptococcus uberis	R.10.SUB.K.5/100
INgene q Toxoplasma gondii	R.10.TOX.K.5/100

\*Conventional end-point PCR, 50 reactions format only

## PCR Kits for SWINE



Product	Article No.
INgene q Actinobacillus pleuropneumoniae	R.11.ABP.K.5/100
INgene q Actinobacillus suis	R.11.ASU.K.5/100
INgene q Anaplasma spp.	R.10.ANS.K.5/100
INgene q ASFV (PPA)	R.11.PPA.K.5TX/Q
INgene q Atypical Porcine Pestivirus	R.11.APP.K.5/100
INgene q Bacteroides fragilis enterotoxina	R.10.BFT.K.5/100
INgene q B. hyodysenteriae and B. pilosicoli MULTIPLEX	R.11.XBR.K.5/100
INgene q Bordetella bronchiseptica	R.10.BBR.K.5/100
INgene q Brachyspira hyodysenteriae	R.11.BHY.K.5/100
INgene q Brachyspira intermedia	R.10.BIN.K.5/100
INgene q Brachyspira pilosicoli	R.10.BPI.K.5/100
INgene q Brachyspira spp.	R.10.BRA.K.5/100
INgene BRUCE-LADDER SUIS *	R.10.BSu.K.5/50
INgene BRUCE-LADDER V *	R.10.BRU.K.5/50
INgene q Brucella spp.	R.10.BSP.K.5/100
INgene q Brucella suis	R.11.BSI.K.5/100
INgene q Brucella Typing MULTIPLEX	R.10.BRM.K.5TC/Q
INgene q Brucella Typing ROX MULTIPLEX	R.10.BRM.K.5TX/Q
INgene q Campylobacter coli	R.10.CAM.K.5/100
INgene q Campylobacter jejuni	R.10.CJE.K.5/100
INgene q Chlamydia abortus	R.10.CAB.K.5/100
INgene q Chlamydiaceae	R.10.CHL.K.5/100
INgene q Clostridioides difficile Toxin A	R.10.CDA.K.5/100
INgene q Clostridioides difficile Toxin B	R.10.CDB.K.5/100
INgene q Clostridium botulinum	R.10.CBO.K.5/100
INgene q Clostridium chauvoei	R.10.CHA.K.5/100
INgene q Clostridium haemolyticum	R.10.CLH.K.5/100
INgene q Clostridium novyi	R.10.CNO.K.5/100
INgene q Clostridium septicum	R.10.CSE.K.5/100
INgene q Coxiella burnetii	R.10.COX.K.5/100
INgene q Cryptosporidium parvum	R.10.CPA.K.5/100
INgene q Cryptosporidium spp.	R.10.CRY.K.5/100
INgene q Cystoisospora suis	R.11.ISU.K.5/100
INgene q E. coli AIDA & EAST	R.11.XAD.K.5/100
INgene q Eimeria spp.	R.10.EIM.K.5/100
INgene q Erysipelothrix rhusiopathiae	R.10.ERU.K.5/100
INgene q Glaesserella parasuis	R.11.HPS.K.5/100

Product	Article No.
INgene q Hepatitis E virus	R.11.HEP.K.5/100
INgene q Influenza A virus	R.10.IFA.K.5/100
INgene q Influenza D virus	R.10.IFD.K.5/100
INgene q Lawsonia intracellularis	R.11.LAW.K.5/100
INgene q Listeria monocytogenes	R.10.LMO.K.5/100
INgene q Mycobacterium avium complex	R.10.MAV.K.5/100
INgene q Mycobacterium bovis & M.caprae	R.10.MYB.K.5/100
INgene q Mycobacterium tuberculosis complex	R.10.MTB.K.5/100
INgene q Mycoplasma hyopneumoniae	R.11.MHP.K.5/100
INgene q Mycoplasma hyorhinis	R.11.MHR.K.5/100
INgene q Mycoplasma hyosynoviae	R.11.MHS.K.5/100
INgene q Mycoplasma suis	R.11.MSU.K.5/100
INgene q Paeniciostriidium sordelli	R.10.CSO.K.5/100
INgene q Pasteurella multocida	R.10.PAS.K.5/100
INgene q Pathogenic Leptospira	R.10.LEP.K.5/100
INgene q PCV2	R.11.PC2.K.5/100
INgene q PCV3	R.11.PC3.K.5/100
INgene q PEDV	R.11.PED.K.5/100
INgene q Porcine Parvovirus	R.11.PoP.K.5/100
INgene q PRRS Universal	R.11.PRU.K.5TX/Q
INgene q Pseudomonas aeruginosa	R.10.PSE.K.5/100
INgene q Rhodococcus equi	R.10.REQ.K.5/100
INgene q Rotavirus A	R.10.RTA.K.5/100
INgene q Rotavirus C	R.11.RTC.K.5/100
INgene q Salmonella enterica	R.10.SEN.K.5/100
INgene q Seneca Virus Valley	R.11.SVV.K.5/100
INgene q Staphylococcus aureus	R.10.SAU.K.5/100
INgene q Staphylococcus hyicus	R.11.STH.K.5/100
INgene q Streptococcus suis	R.11.SSU.K.5/100
INgene q Suid Alpha Herpesvirus (Aujeszky)	R.11.SHV.K.5/100
INgene q Swine Delta Coronavirus	R.11.SDC.K.5/100
INgene q Swine Pox Virus	R.11.SWP.K.5/100
INgene q TGEV	R.11.TGV.K.5/100
INgene q Trichuris suis	R.11.TSU.K.5/100

All kits are Real-Time PCR (2 formats: 50 and 100 reactions).  
 Exceptions:  
 • 100 reactions format only  
 \* conventional PCR, 50 reactions format only

## PCR Kits for POULTRY



Product	Article No.
INgene q Avian Coronavirus (IBV & TuCV)	R.18.ACO.K.5/100
INgene q Avibacterium paragallinarum	R.18.AVI.K.5/100
INgene q Bordetella avium	R.18.BIU.K.5/100
INgene q Brachyspira intermedia	R.10.BIN.K.5/100
INgene q Brachyspira pilosicoli	R.10.BPI.K.5/100
INgene q Brachyspira spp.	R.10.BRA.K.5/100
INgene q Campylobacter coli	R.10.CAM.K.5/100
INgene q Campylobacter hepaticus	R.18.CHE.K.5/100
INgene q Campylobacter jejuni	R.10.CJE.K.5/100
INgene q Campylobacter spp.	R.10.CPY.K.5/100
INgene q Eimeria acervulina	R.18.EAC.K.5/100
INgene q Clostridium botulinum	R.10.CBO.K.5/100

Product	Article No.
INgene q Eimeria brunetti	R.18.EBR.K.5/100
INgene q Eimeria maxima	R.18.EMX.K.5/100
INgene q Eimeria mitis	R.18.EMI.K.5/100
INgene q Eimeria necatrix	R.18.ENE.K.5/100
INgene q Eimeria praecox	R.18.EPR.K.5/100
INgene q Eimeria spp.	R.10.EIM.K.5/100
INgene q Eimeria tenella	R.18.ETE.K.5/100
INgene q Fowlpox virus	R.18.FPO.K.5/100
INgene q Histomonas meleagridis	R.18.HME.K.5/100
INgene q Inclusion body hepatitis (Adenovirus I)	R.18.FAD.K.5/100
INgene q Influenza A virus	R.10.IFA.K.5/100
INgene q M. gallisepticum and M. synoviae MULTIPLEX	R.18.XMG.K.5/100
INgene q Marek (MDV)	R.18.MRE.K.5/100
INgene q Mycobacterium avium complex	R.10.MAV.K.5/100
INgene q Mycobacterium tuberculosis complex	R.10.MTB.K.5/100
INgene q Mycoplasma gallisepticum	R.18.MGA.K.5/100
INgene q Mycoplasma synoviae	R.18.MSY.K.5/100
INgene q Ornithobacterium rhinotracheale	R.18.ORN.K.5/100
INgene q Pasteurella multocida	R.10.PAS.K.5/100
INgene q Riemerella anatipestifer	R.18.RIE.K.5/100
INgene q Salmonella enterica	R.10.SEN.K.5/100
INgene q Salmonella gallinarum	R.18.SGA.K.5/100
INgene q Salmonella infantis	R.10.STI.K.5/100
INgene q Salmonella pullorum	R.18.SPU.K.5/100

## PCR Kits for PETS



Product	Article No.
INgene q Anaplasma phagocytophilum	R.10.APH.K.5/100
INgene q Anaplasma spp.	R.10.ANS.K.5/100
INgene q Babesia spp. pets	R.15.BPE.K.5/100
INgene q Bartonella henselae	R.16.BHE.K.5/100
INgene q Bartonella spp.	R.16.BAR.K.5/100
INgene q Bordetella bronchiseptica	R.10.BBR.K.5/100
INgene q Borrelia burgdorferi	R.10.BBS.K.5/100
INgene BRUCE-LADDER V *	R.10.BRU.K.5/50
INgene q Brucella canis	R.15.BRC.K.5/100
INgene q Brucella spp.	R.10.BSP.K.5/100
INgene q Brucella Typing MULTIPLEX	R.10.BRM.K.5TC/Q
INgene q Brucella Typing ROX MULTIPLEX	R.10.BRM.K.5TX/Q
INgene q Campylobacter coli	R.10.CAM.K.5/100
INgene q Campylobacter jejuni	R.10.CJE.K.5/100
INgene q Campylobacter spp.	R.10.CPY.K.5/100
INgene q Canine Circovirus	R.15.CaC.K.5/100
INgene q Canine Coronavirus	R.15.CCO.K.5/100
INgene q Canine Distemper virus	R.15.CaD.K.5/100
INgene q Canine Herpesvirus	R.15.CHV.K.5/100
INgene q Canine Parainfluenza virus	R.15.CPI.K.5/100
INgene q Canine Parvovirus 2	R.15.CaP.K.5/100
INgene q Clostridium botulinum	R.10.CBO.K.5/100
INgene q Cryptosporidium spp.	R.10.CRY.K.5/100

Product	Article No.
INgene q Cytauxzoon felis	R.16.CYF.K.5/100
INgene q Cytauxzoon spp.	R.16.CYT.K.5/100
INgene q Dirofilaria immitis	R.10.DIM.K.5/100
INgene q Dirofilaria repens	R.10.DRE.K.5/100
INgene q Ehrlichia canis	R.15.EHC.K.5/100
INgene q Ehrlichia spp.	R.10.EHR.K.5/100
INgene q Encephalitozoon cuniculi	R.10.ECU.K.5/100
INgene q Feline Calicivirus	R.16.FeC.K.5/100
INgene q Feline Coronavirus	R.16.FCo.K.5/100
INgene q Feline Herpesvirus	R.16.FHV.K.5/100
INgene q Feline Immunodeficiency virus	R.16.FeI.K.5/100
INgene q Feline Leukemia Virus	R.16.FeL.K.5/100
INgene q Feline Panleukopenia virus	R.16.FPL.K.5/100
INgene q Giardia intestinalis	R.10.GIN.K.5/100
INgene q Haemoplasma spp. Pets	R.10.HAE.K.5/100
INgene q Leishmania spp.	R.15.LEI.K.5/100
INgene q Mycoplasma haemofelis & M. Haemocanis	R.10.MFC.K.5/100
INgene q Neospora caninum	R.10.NEO.K.5/100
INgene q Pasteurella multocida	R.10.PAS.K.5/100
INgene q Pathogenic Leptospira	R.10.LEP.K.5/100
INgene q Piroplasma	R.10.PIR.K.5/100
INgene q Toxoplasma gondii	R.10.TOX.K.5/100

\*Conventional end-point PCR, 50 reactions format only

## PCR Kits for EQUINE



Product	Article No.
INgene q Anaplasma spp.	R.10.ANS.K.5/100
INgene q Anaplasma phagocytophilum	R.10.APH.K.5/100
INgene q Babesia caballi	R.14.BCA.K.5/100
INgene BRUCE-LADDER V *	R.10.BRU.K.5/50
INgene q Brucella spp.	R.10.BSP.K.5/100
INgene q Brucella Typing MULTIPLEX	R.10.BRM.K.5TC/Q
INgene q Brucella Typing ROX MULTIPLEX	R.10.BRM.K.5TX/Q
INgene q Campylobacter coli	R.10.CAM.K.5/100
INgene q Campylobacter jejuni	R.10.CJE.K.5/100
INgene q Chlamydiae	R.10.CHL.K.5/100
INgene q Clostridioides difficile Toxin A	R.10.CDA.K.5/100
INgene q Clostridioides difficile Toxin B	R.10.CDB.K.5/100
INgene q Clostridium botulinum	R.10.CBO.K.5/100
INgene q Corynebacterium pseudotuberculosis	R.10.COR.K.5/100
INgene q Coxiella burnetii	R.10.COX.K.5/100
INgene q Cryptosporidium spp.	R.10.CRY.K.5/100
INgene q Equine Herpesvirus 1	R.14.HE1.K.5/100
INgene q Equine Herpesvirus 2	R.14.HE2.K.5/100
INgene q Equine Herpesvirus 4	R.14.HE4.K.5/100
INgene q Influenza A virus	R.10.IFA.K.5/100
INgene q Listeria monocytogenes	R.10.LMO.K.5/100
INgene q Pasteurella multocida	R.10.PAS.K.5/100
INgene q Pathogenic Leptospira	R.10.LEP.K.5/100
INgene q Piroplasma	R.10.PIR.K.5/100
INgene q Pseudomonas aeruginosa	R.10.PSE.K.5/100
INgene q Rhodococcus equi	R.10.REQ.K.5/100

Product	Article No.
INgene q Rhodococcus equi vapA	R.14.REV.K.5/100
INgene q Rotavirus A	R.10.RTA.K.5/100
INgene q Salmonella enterica	R.10.SEN.K.5/100
INgene q Staphylococcus aureus	R.10.SAU.K.5/100
INgene q Streptococcus equi	R.10.SEQ.K.5/100
INgene q Taylorella equigenitalis	R.14.TAY.K.5/100
INgene q Theileria equi	R.14.TEQ.K.5/100

## PCR Kits for RABBIT



Product	Article No.
INgene q Bacteroides fragilis enterotoxina	R.10.BFT.K.5/100
INgene q Bordetella bronchiseptica	R.10.BBR.K.5/100
INgene BRUCE-LADDER V*	R.10.BRU.K.5/50
INgene q Brucella spp.	R.10.BSP.K.5/100
INgene q Brucella Typing MULTIPLEX	R.10.BRM.K.5TC/Q
INgene q Brucella Typing ROX MULTIPLEX	R.10.BRM.K.5TX/Q
INgene q Campylobacter coli	R.10.CAM.K.5/100
INgene q Campylobacter jejuni	R.10.CJE.K.5/100
INgene q Chlamydia abortus	R.10.CAB.K.5/100
INgene q Chlamydiae	R.10.CHL.K.5/100
INgene q Clostridioides difficile Toxin A	R.10.CDA.K.5/100
INgene q Clostridioides difficile Toxin B	R.10.CDB.K.5/100
INgene q Clostridium botulinum	R.10.CBO.K.5/100
INgene q Clostridium spiroforme	R.17.CSP.K.5/100
INgene q Coxiella burnetii	R.10.COX.K.5/100
INgene q Cryptosporidium spp.	R.10.CRY.K.5/100
INgene q Eimeria magna	R.17.EMA.K.5/100
INgene q Eimeria spp.	R.10.EIM.K.5/100
INgene q Encephalitozoon cuniculi	R.10.ECU.K.5/100
INgene q Listeria monocytogenes	R.10.LMO.K.5/100
INgene q Myxoma virus	R.17.MYX.K.5/100
INgene q Pasteurella multocida	R.10.PAS.K.5/100
INgene q Pathogenic Leptospira	R.10.LEP.K.5/100
INgene q Pseudomonas aeruginosa	R.10.PSE.K.5/100
INgene q RHDV new variant	R.17.RHD.K.5/100
INgene q Rotavirus A	R.10.RTA.K.5/100
INgene q Salmonella enterica	R.10.SEN.K.5/100
INgene q Staphylococcus aureus	R.10.SAU.K.5/100

## PCR Kits for AQUACULTURE



Product	Article No.
INgene q Aeromonas hydrophila	R.60.AHY.K.5/100
INgene q Aeromonas salmonicida	R.60.ASA.K.5/100
INgene q Flavobacterium psychrophilum	R.60.FPS.K.5/100
INgene q Tenacibaculum maritimum	R.60.TMA.K.5/100
INgene q VHSV	R.60.VHS.K.5/100
INgene q Vibrio anguillarum	R.60.VAN.K.5/100
INgene q Yersinia ruckeri	R.60.YRU.K.5/100

## PCR Kits for MINK



Product	Article No.
INgene q AMDV	R.09.AMD.K.5/100



# INSTRUMENTS

## ELISA Analyzers

Comprehensive diagnostic solutions improve lab efficiency and minimize overall costs. We offer precise, compact and cost-efficient instruments supported with outstanding customer service.

These innovative, industry-leading instruments - ThunderBolt® and The BOLT™ - are the standard platforms for our ELISA-based analytical test kits including allergens, food pathogens, mycotoxins, veterinary drug residues, and animal health kits. We are delighted to provide one of the most complete, integrated, and innovative test offerings in the market.

### ThunderBolt®



The ThunderBolt® is an innovative 2-plate, fully automated, open platform that is compact and cost efficient. The user friendly and flexible software is capable of programming a broad range of protocols. The ThunderBolt® is available for both ELISA and Chemiluminescent (CLIA) applications.

### Key Benefits

- Fully-automated: load and walk away
- High capacity: 192 samples
- Open architecture: program any ELISA or Chemiluminescent (CLIA) protocol\* (CLIA protocols require ELISA+CLIA reader option)
- Adaptable: capable of running many different protocols in a single batch
- Built-in reader: ultra-compact and fully-automated reader options
- Compact: smallest and lightest instrument in its class
- User-friendly and flexible software
- Extensive configuration – run up to 8 protocols in a single batch
- On-board camera: monitor internal operations in real-time

### The Bolt™



The Bolt™, a one-plate ELISA+CLIA processor, shares many features of the ThunderBolt®, with a more customizable, lower throughput and cost-effective design. Our interactive user-friendly software provides a simple laboratory experience for instrument operation.

### Key Benefits

- Space saving design – fits standard 60 cm lab bench
- 96 sample capacity
- Program any EIA and CLIA protocol
- High precision syringes
- Low consumables costs (no disposable tips)
- Exterior status indicator light
- Connectivity to a laboratory information system (LIS)

#### Modular Design with Optional:

- Convention incubator
- Linear shaker
- ELISA or ELISA+ CLIA Reader\*

\* CLIA protocols require ELISA + CLIA reader option



## ThunderBolt®



Specifications	
Intelligent Racks	Automatic sample location management
System Architecture	Open, fully customizable
High Precision Micro-Syringe	Aspirate 1uL with $\leq 3\%$ CV
On-board Reader(s)	Spectrophotometer or Spectrophotometer + Fluorescence Combo Reader
Forced Convection Incubator	Evenly heats using forced air to eliminate "Edge Effect"
On-board Camera	Probe-mounted camera allows remote troubleshooting
Sliding Sample Tray	Easy loading and unloading of samples
Built-in Barcode Reader	Streamline loading and decrease sample tracking errors
Orbital MTP Shaker	Precise adherence to assay protocols
Small Footprint	Fits on a 60cm deep standard laboratory bench; weight: 30 kg (65 lbs)
Sample Capacity	192 patient sample positions
User Interface	MS Windows Graphical User Interface (Windows 7 or above)
CE Marked	Yes
Article No.	00300

## The Bolt™



Specifications	
System Architecture	Open, fully customizable
High Precision Micro-Syringe	Aspirate 1uL with $\leq 3\%$ CV
On-board Reader(s)	Spectrophotometer or Spectrophotometer + Fluorescence Combo Reader
Forced Convection Incubator	Evenly heats to eliminate "Edge Effect"
Linear Shaker	Precise adherence to assay protocols / No-spill design
Small Footprint	Fits on a 60cm deep standard laboratory bench; weight: 27 kg (59.5 lbs)
Sample Capacity	96 patient sample positions
User Interface	MS Windows Graphical User Interface (Windows 7 or above)
CE Marked	Yes
Article No.	00500

## RapidScan ST5-W Lateral Flow Assay Reader

Companies and laboratories that use lateral flow devices as a rapid test method need to obtain quick and reliable results for contamination testing.

The RapidScan ST5-W Lateral Flow Assay Reader is an accurate, easy to use and highly flexible imaging platform used for lateral flow assay analysis. The instrument was designed specifically for field and in-process testing applications that require qualitative and quantitative test results.



### Key Benefits

- **Ease-of-use:** the reader is easy to set up and operate, featuring an intuitive user interface with a colour touchscreen display.
- **Quantitative results** are obtained within a few minutes. Data can be stored on the reader then exported through a USB port.
- **Applications:** the reader is compatible with a wide range of allergen, GMO and glyphosate strip tests offered by Gold Standard Diagnostics. Additionally, the INgezim ASF CROM Ag, LFA for the detection of ASFV antigen in porcine blood samples, is also validated on the RapidScan reader.

Specifications	
Article No.	LFRSCAN002
Size and Weight	11x14x21 cm, 930 g
Display	5" LCD touch screen

## GSD Absorbance 96 ELISA Reader

GSD Absorbance 96 is a new category of plate readers with the mission to simplify the workflow in the laboratory. The reader delivers a robust performance and accurate results with a small footprint.



### Key Benefits

- 7x smaller than the smallest comparable reader
- Maintenance-free user experience
- 96 individual detection units enabling simultaneous signal detection
- Variety of available wavelength combinations
- No license fee for software use

Specifications	
Article No.	EIAREAD002
Size and weight	9.6 x 15.4 x 5.5 cm, 900g
Microplates types	96-well microplates
Wavelength selection	Example combinations (FWHM 10 nm): 450, 492, 562, 620 nm / 405, 450, 540, 630 nm / 492, 562, 605, 650 nm. Other filter combinations in the range of 400–1000 nm



## Nucleic Acid Purification System: GSD Auto-Pure 96

GSD Auto-Pure 96 Nucleic Acid Purification System is an automatic extraction and purification instrument for DNA/RNA, proteins and cells. The purification technology is automated and enables high-speed, high-quality processing with no cross-contamination between the samples or reagent carry-over. Combined with different kinds of magnetic bead nucleic acid extraction kits, it can operate 1-96 samples or simultaneously and extract DNA and RNA rapidly, in 30-60 minutes.



### Key Benefits

- Simple, intelligent operation
- High quality and rapid extraction
- Multiple pollution control
- Remote monitoring by app
- Reliable structure and stable operation

#### Specifications

Article No.	GSD-Auto-Pure96
Throughput	1-96
Process volume	50-1000 µl
Consumables	Deepwell plate, Elution plate, Magnetic tip comb

## Real-time PCR System: AriaMX™

The AriaMx Real-Time PCR system is a fully integrated qPCR solution for amplification, detection, and data analysis, combining a novel thermal cycler, an advanced optical system with LED excitation source, and comprehensive data analysis software.



### Key Benefits

- Usable with many fluorescence detection chemistries, including SYBR Green and EvaGreen dyes, and fluorogenic probe systems such as TaqMan
- Proprietary rapid hot-start enzymes and fastest industry high-resolution melt reagents
- Intuitive operation with a touch screen interface
- Modular optics and open reagent platform for increased agility
- Multiplex capability with six filters for five plexing and two to five channels
- Intuitive open-source software and robust data analysis with proprietary algorithms

## OT-2 Liquid handler for BACGene Use

Real-time PCR solutions like BACGene are used worldwide for the detection of foodborne pathogens, delivering reliable results substantially faster than classic detection methods. The OT-2 liquid handler provides an automation solution for the manual steps of the BACGene workflow, serving as a platform to automate sample input up to the PCR plate preparation:



- Enhanced Accuracy and Reliability**
  - Reduction of human error - no repeated training needs
  - Increased consistency between runs
- Increased efficiency in your laboratory**
  - More than 2x higher productivity – per sample/hour
  - Small footprint to run both lysis and PCR prep – app. 63 x 57 x 66 cm
- Costs and Resources Optimization**
  - Price sensitive solution to support an optimized resource planning
  - Frees up your technician by approx. 42 min per full plate

## Your Complete Package

Amount	Name	Product Description	Ordering Details
	OT-2 Starter package	OT-2 liquid handler including respective moduls and pipettes to run BACGene workflow in an automated setup. <ul style="list-style-type: none"> <li>• 2x Aluminium holder</li> <li>• Heating module including Aluminium holder</li> <li>• Lysis reagent holder</li> <li>• 2 distinct multi-channel pipettes for up to 200 and 20 µL volumes</li> </ul>	HU0060910
3x*	P20 - 20 µL tip box (96)	Filter tips for P20 usage	HU0060906
2x*	P300 - 200 µL tip box (96)	Filter tips for P300 usage	HU0060907
1x*	Service Package	Yearly maintenance checks	HU0060908

\*As an example a mixed full plate (46 samples Listeria + 46 samples Salmonella) will need 199 tips divided into 146x20µL tips in 3 separate tip boxes and 53x200µL tips in 2 separate tip boxes.

# SERVICES

## Automation Solutions: Instruments, Kits and Services

Automation provides multiple advantages including reduced workload of the laboratory personnel, standardized performance, and improved efficiency compared to manual assay handling. However, to reap the benefits of automation, certain conditions must be met:


- Proper maintenance programmes followed to keep the working standards of the machine;
- Adequate training and prompt assistance provided to any team using an automatic analyzer;
- Validated protocols.

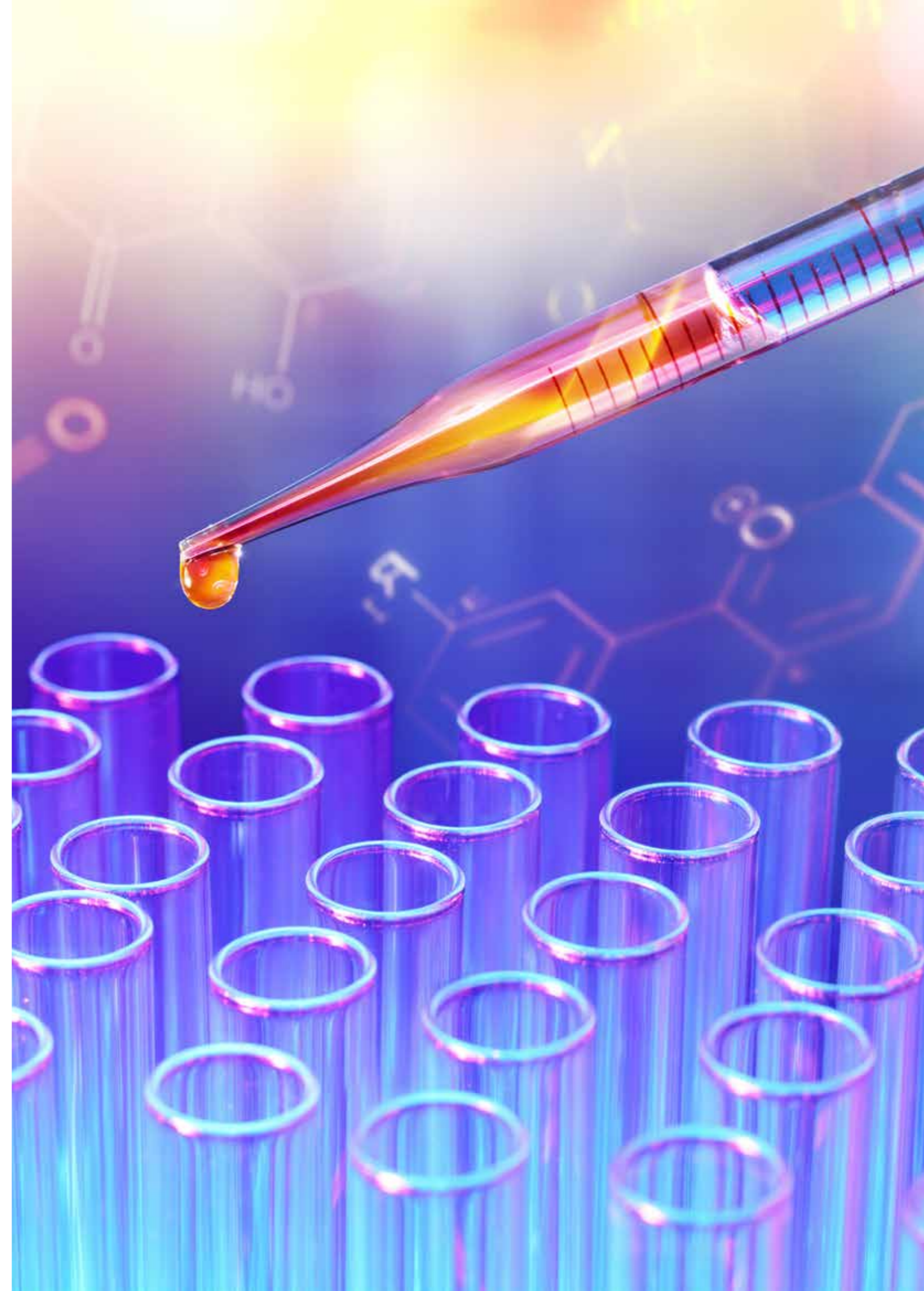
Our experienced Service Team is happy to help you - pick the Service Package that best fit your needs, or create your custom support plan for your instruments!

-  **Installation**
-  **Maintenance**
-  **On-site intervention**
-  **Assistance**
-  **Customer Support**
-  **Training**

## Service Packages

From Warranty to Premium

	 1ST YEAR GSD WARRANTY	 MAINTENANCE SERVICE FROM 2ND YEAR	 PREMIUM ASSISTANCE FROM 2ND YEAR
 <b>Preventive maintenance</b>	✓ <i>one included</i>	✓	✓
 <b>Standard spare parts</b>	✓	✓	✓
 <b>Travel expenses</b>	✓	<i>not included*</i>	✓
 <b>On-site intervention</b>	✓ For manufacturing defects and defective spare parts	<i>not included</i>	✓ One extra included (other than preventive maintenance)
 <b>Remote assistance</b>	✓	<i>not included</i>	✓
 <b>Priority line</b>	<i>not included</i>	<i>not included</i>	✓ Mon-Fri 9-17 CET





Get product information and purchase kits conveniently online:



**Gold Standard Diagnostics**  
[www.goldstandarddiagnostics.com](http://www.goldstandarddiagnostics.com)  
[contact@eu.goldstandarddiagnostics.com](mailto:contact@eu.goldstandarddiagnostics.com)